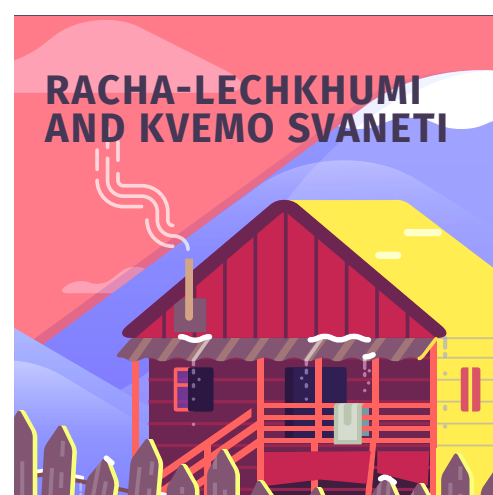


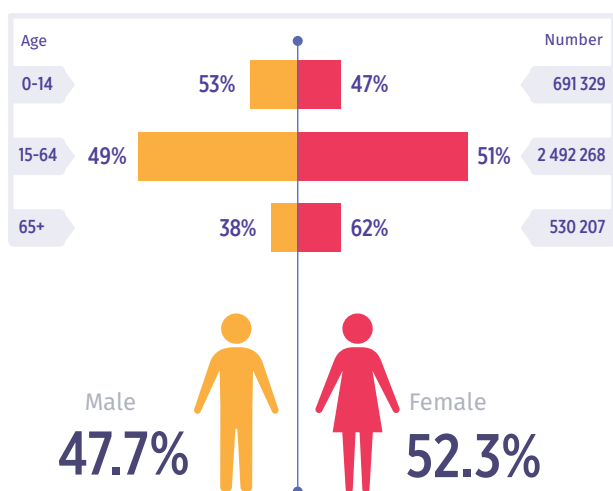
2014 GENERAL POPULATION CENSUS IN GEORGIA



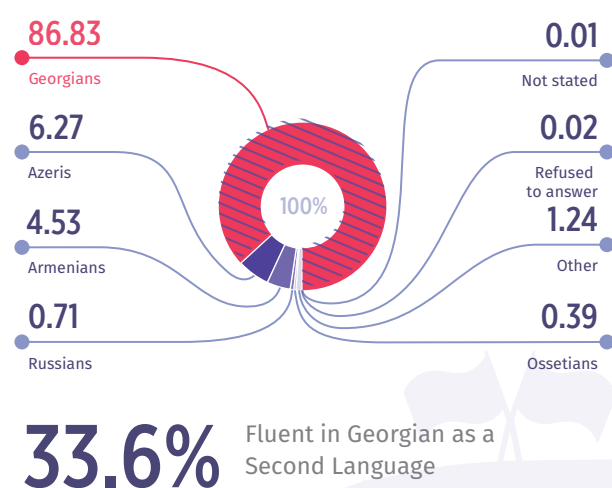
GEORGIA

Total Population:
3 713 804

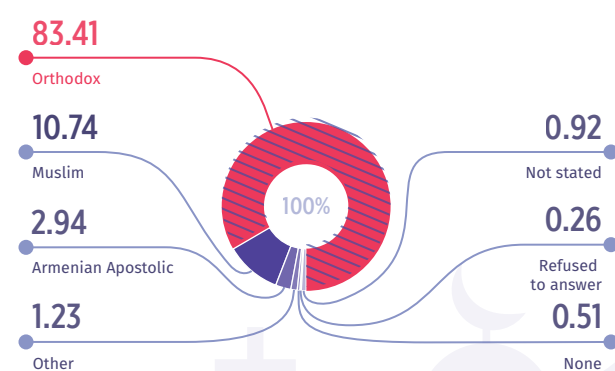
AGE BY GENDER



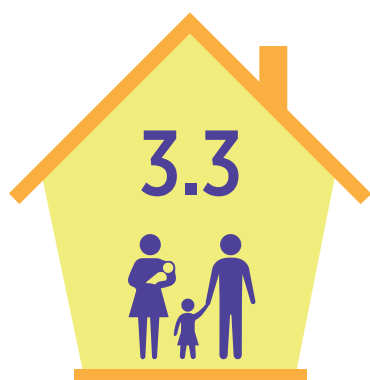
ETHNICITY



RELIGION

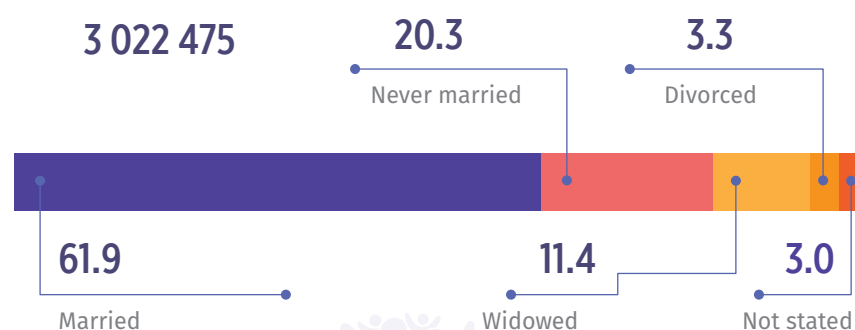


AVERAGE HOUSEHOLD SIZE



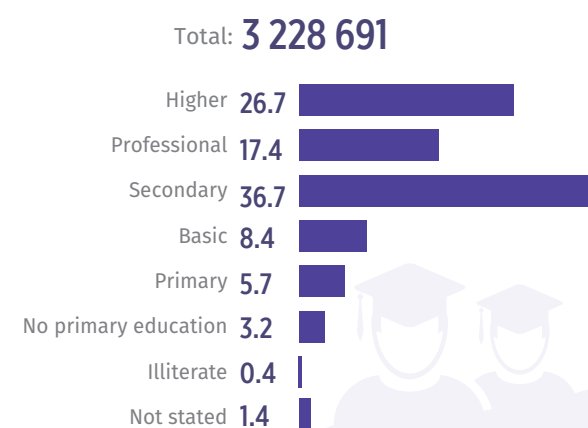
MARITAL STATUS

Marital status for 15 and older (%)



EDUCATION

Highest education level for 10 and older (%)



IMMIGRANTS

Distribution according to the previous places of residence

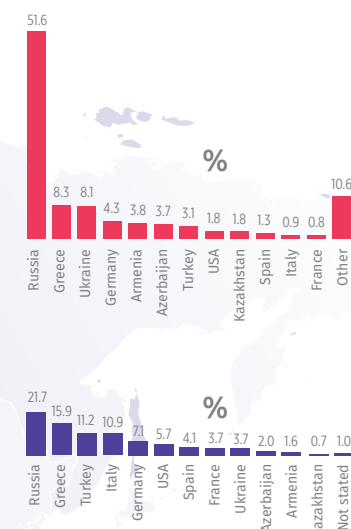
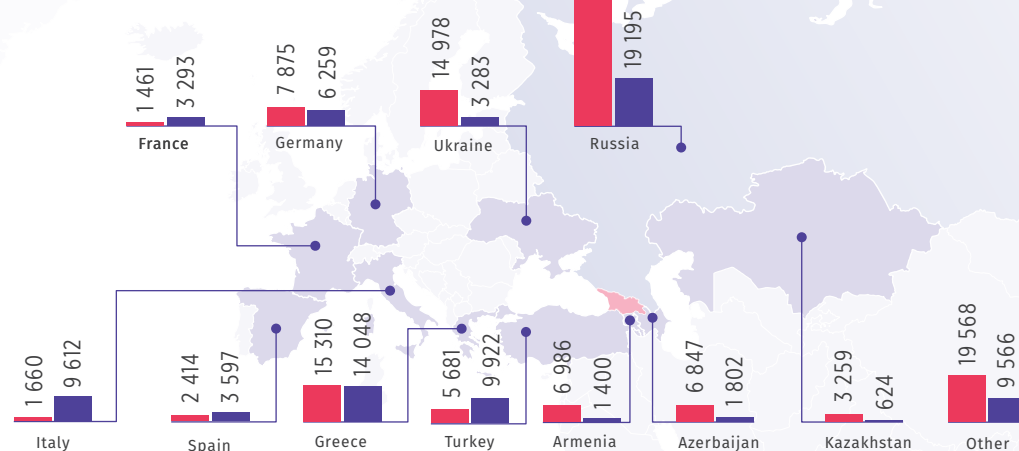
Total 184 629

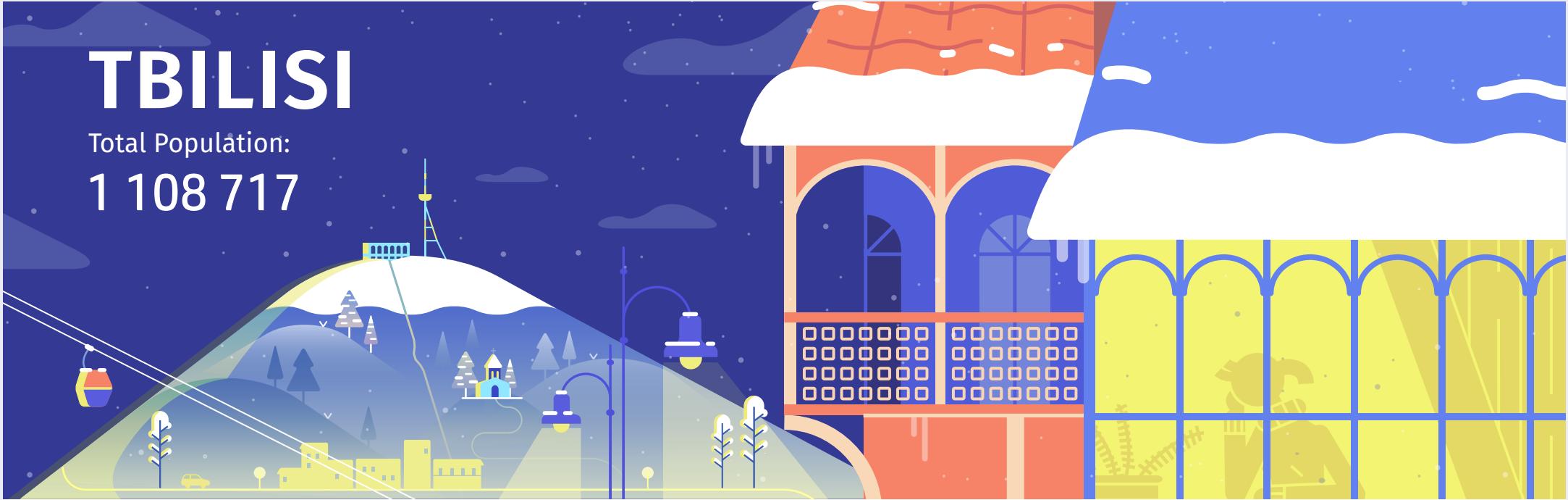


EMIGRANTS

Distribution of Emigrants by current places of residence

Total 88 541

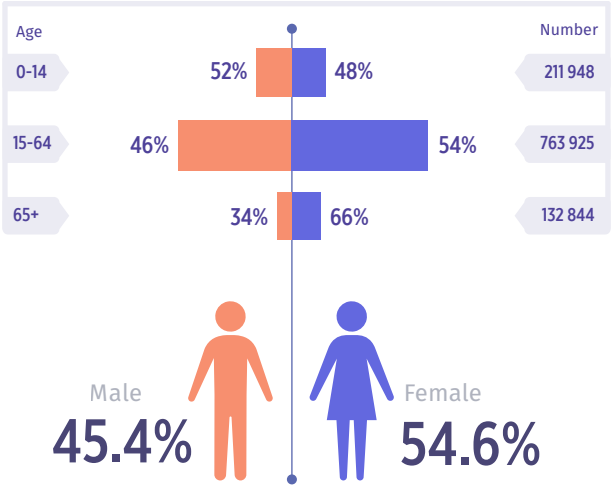




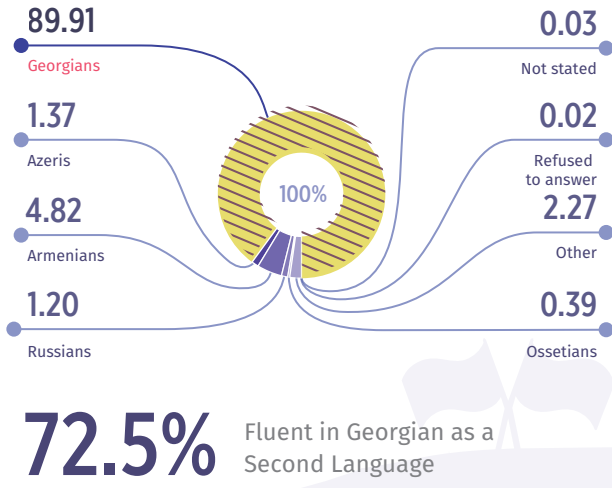
TBILISI

Total Population:
1 108 717

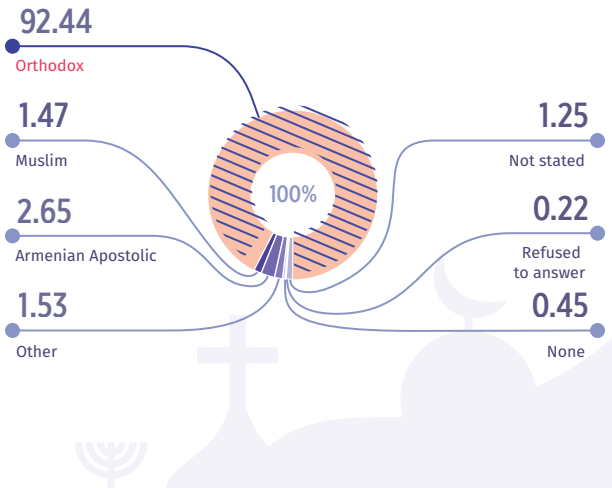
AGE BY GENDER



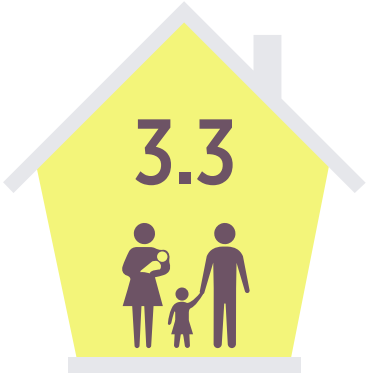
ETHNICITY



RELIGION

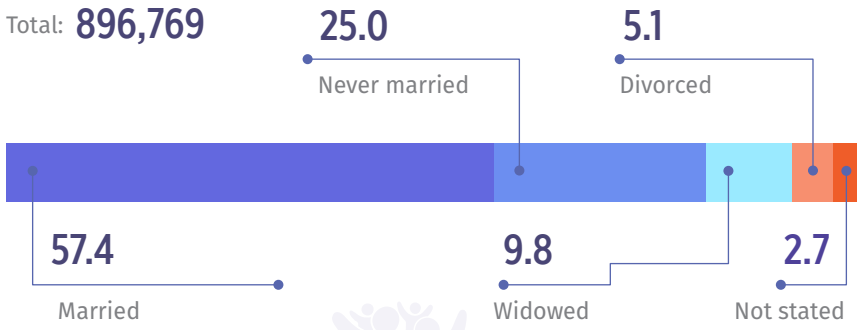


AVERAGE HOUSEHOLD SIZE



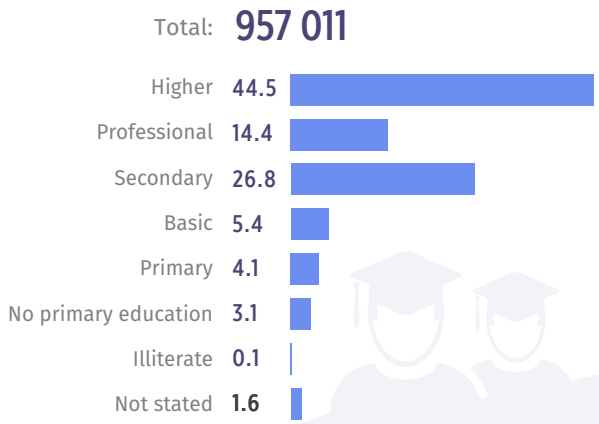
MARITAL STATUS

Marital status for 15 and older (%)



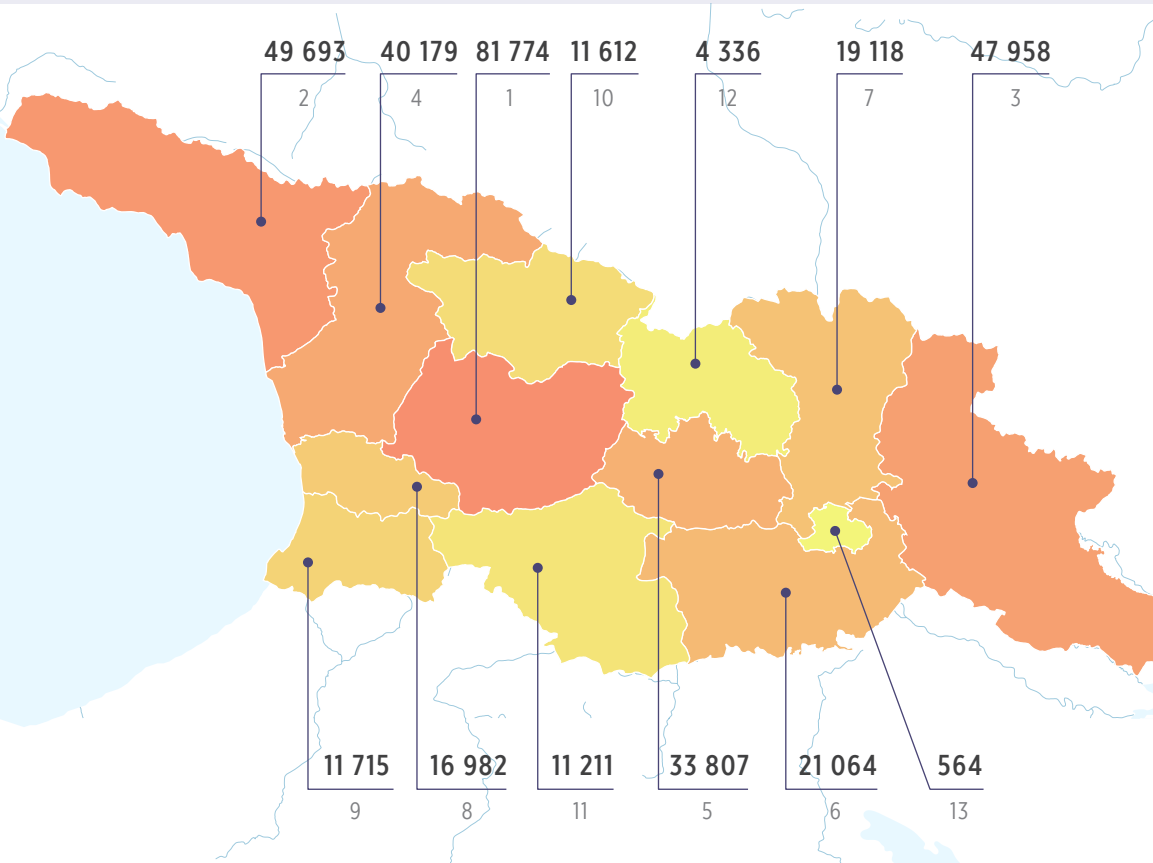
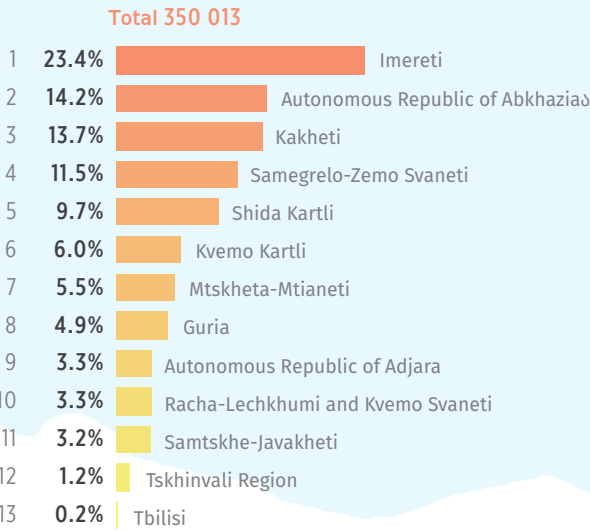
EDUCATION

Highest education level for 10 and older (%)



INTERNAL MIGRANTS

Distribution according to the previous places of residence

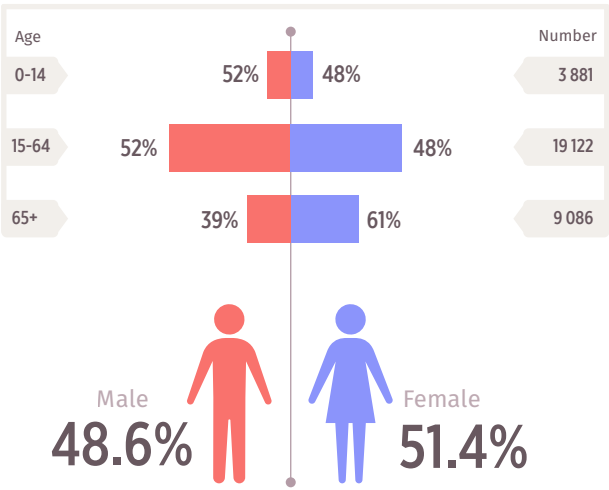


Home

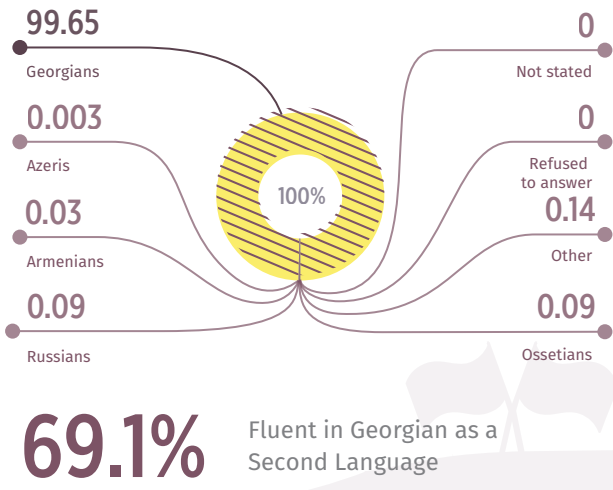
RACHA-LECHKHUMI AND KVEMO SVANETI

Total Population:
32 089

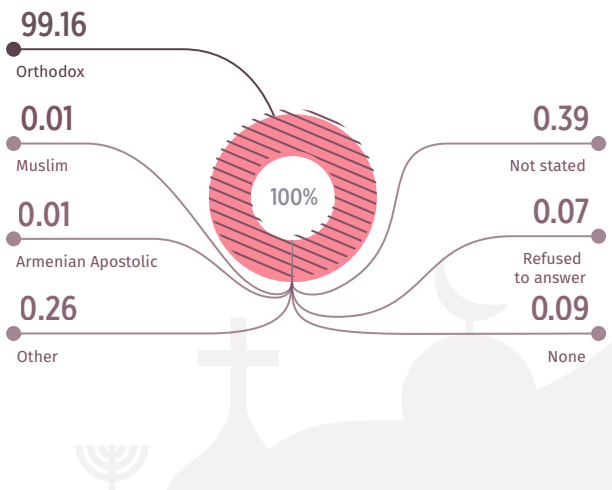
AGE BY GENDER



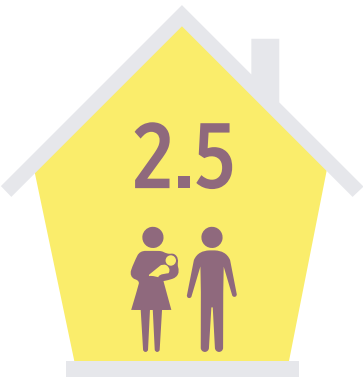
ETHNICITY



RELIGION

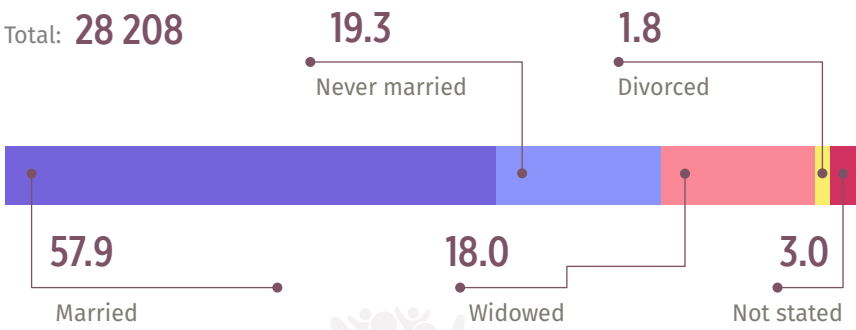


AVERAGE HOUSEHOLD SIZE



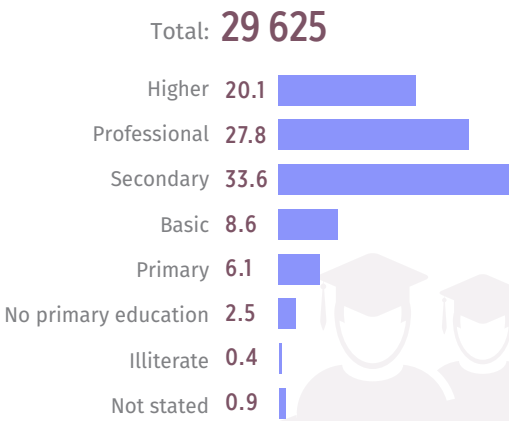
MARITAL STATUS

Marital status for 15 and older (%)



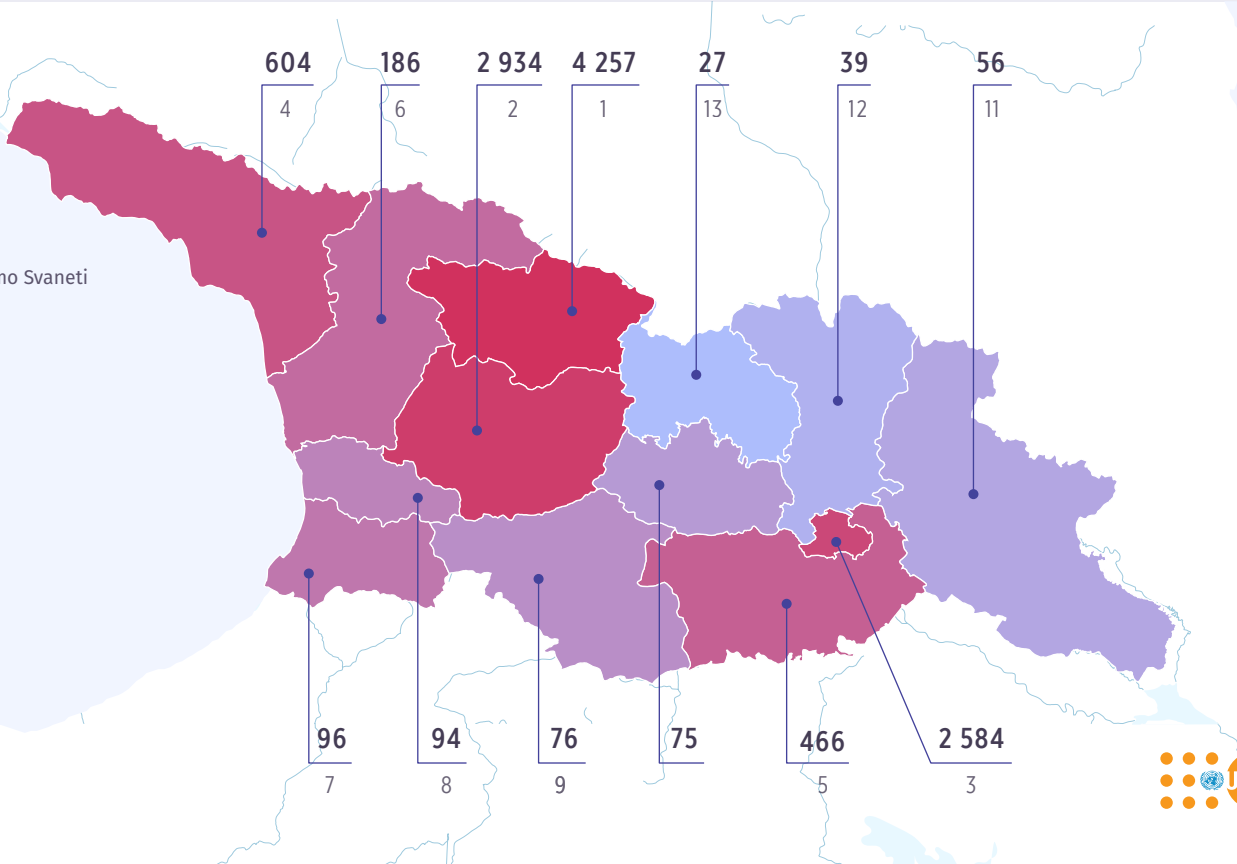
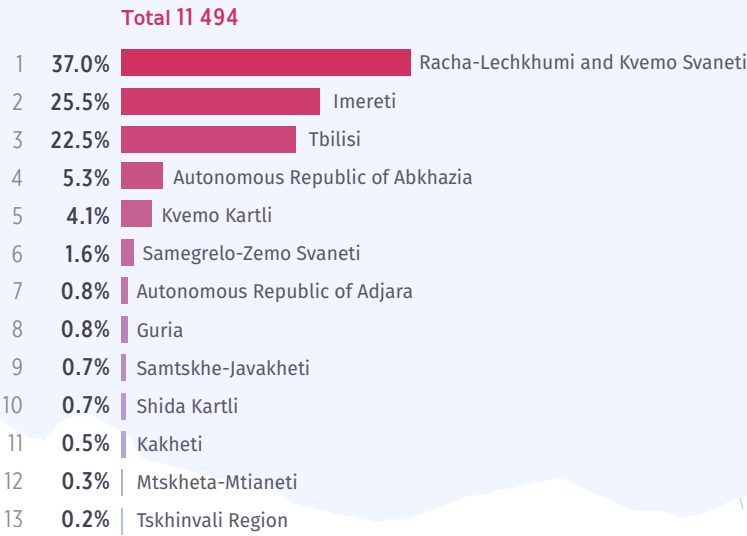
EDUCATION

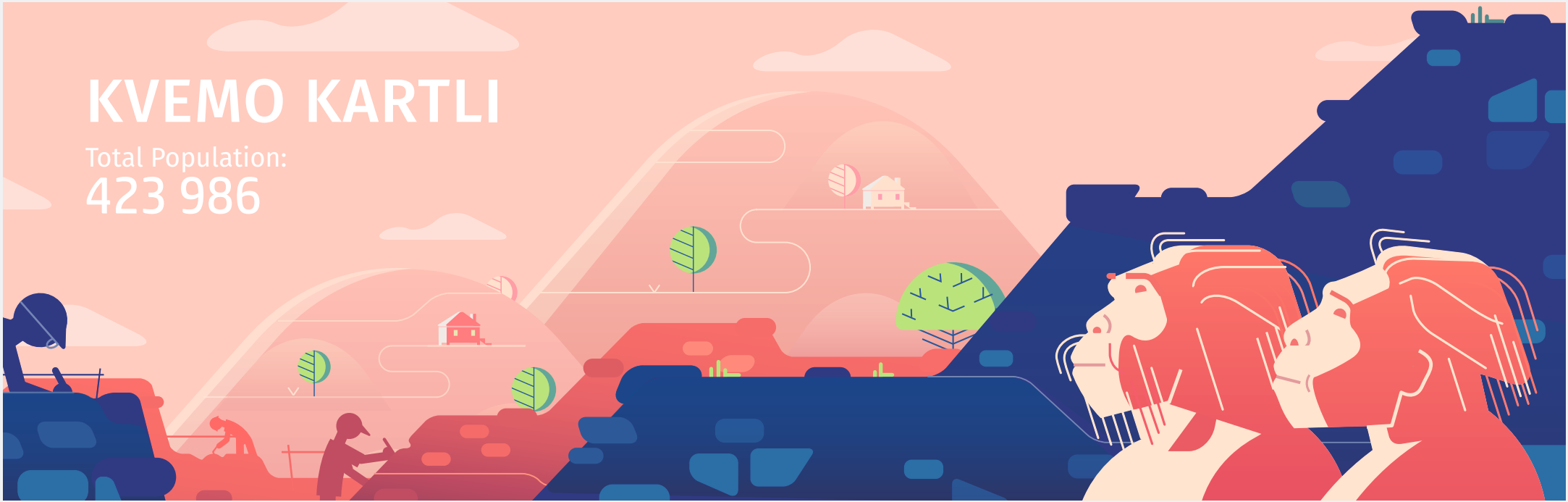
Highest education level for 10 and older (%)



INTERNAL MIGRANTS

Distribution according to the previous places of residence

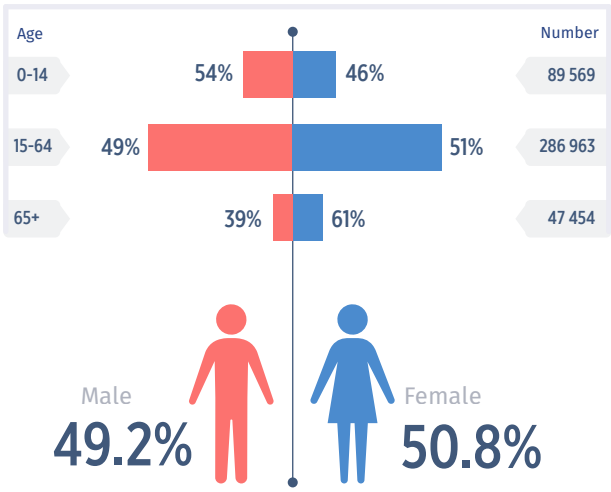




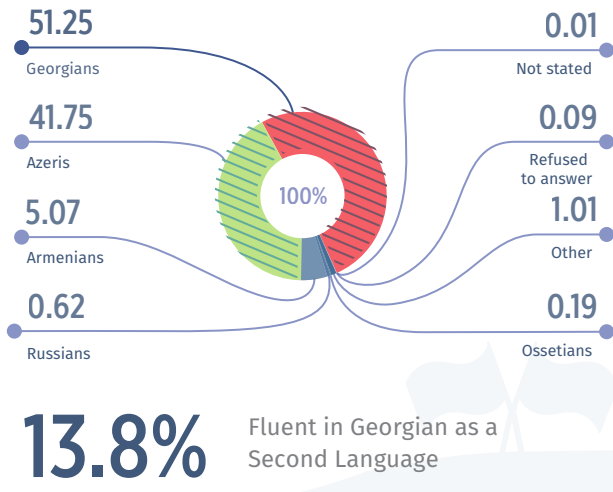
KVEMO KARTLI

Total Population:
423 986

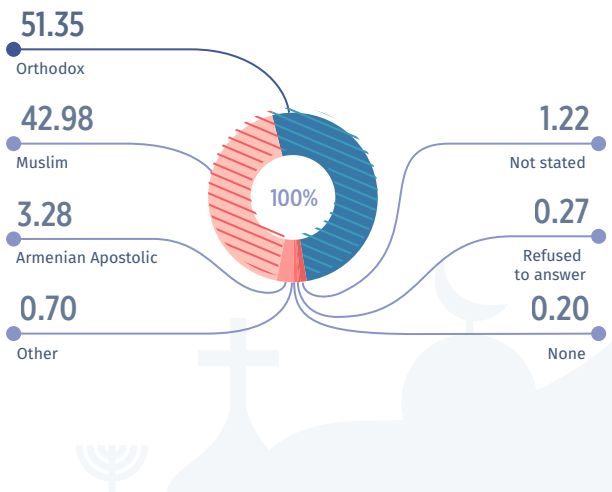
AGE BY GENDER



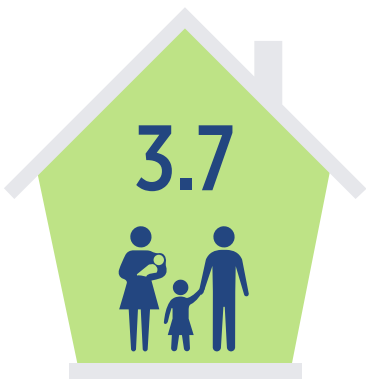
ETHNICITY



RELIGION

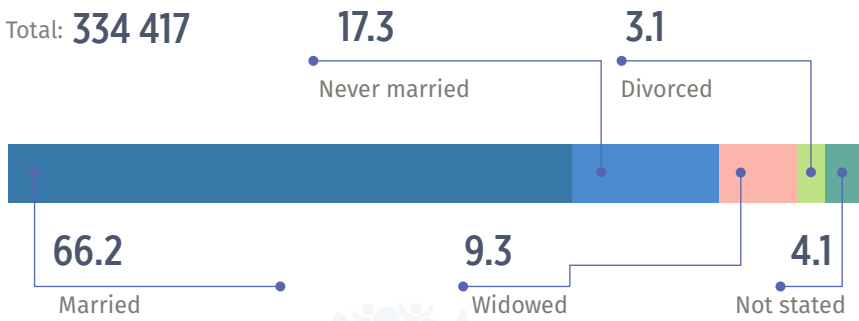


AVERAGE HOUSEHOLD SIZE



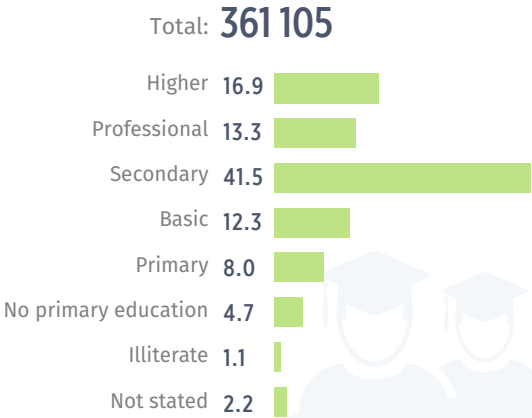
MARITAL STATUS

Marital status for 15 and older (%)



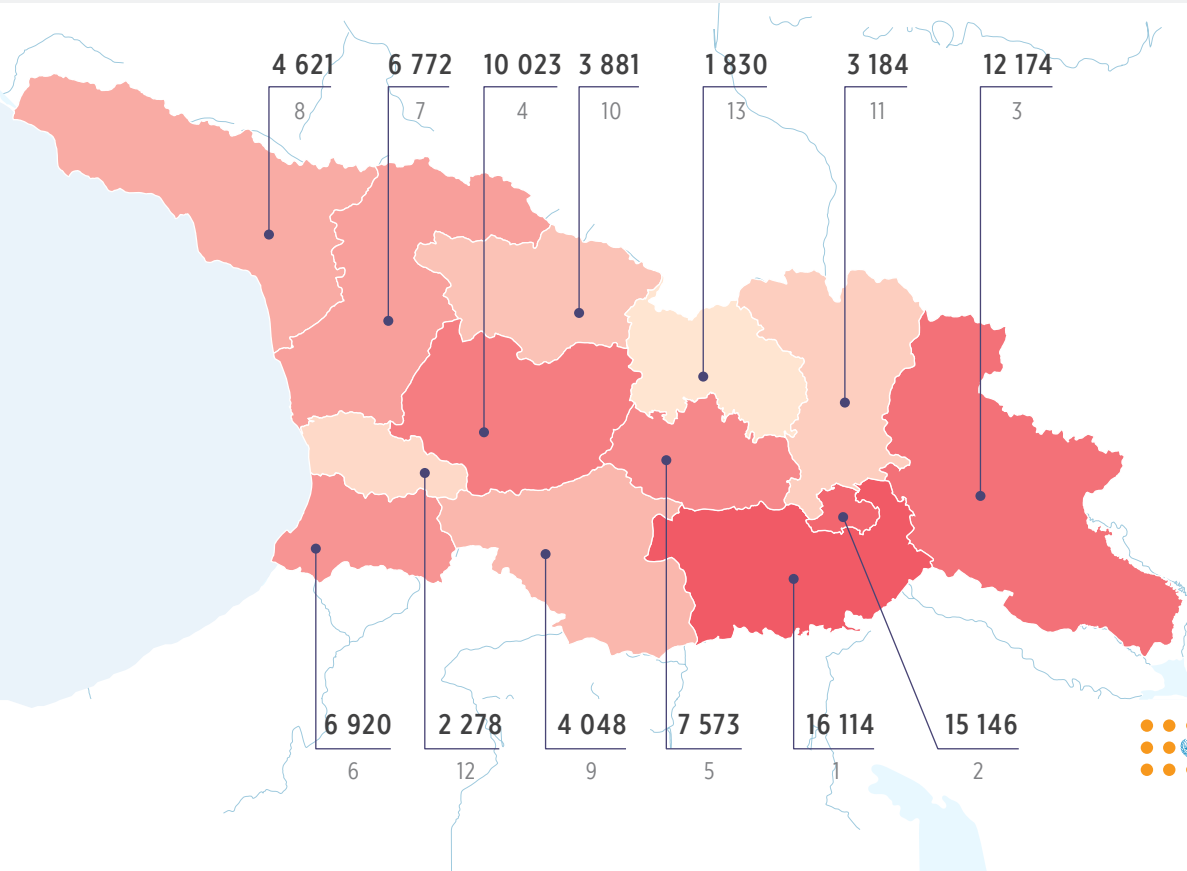
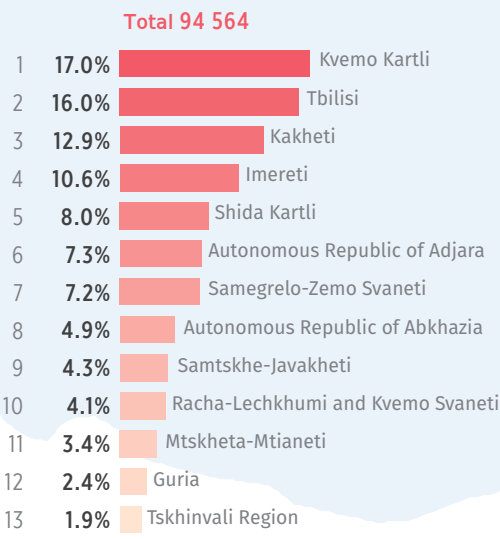
EDUCATION

Highest education level for 10 and older (%)



INTERNAL MIGRANTS

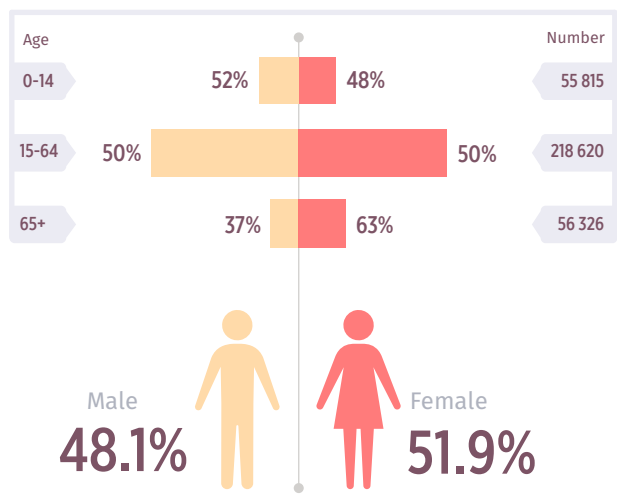
Distribution according to the previous places of residence



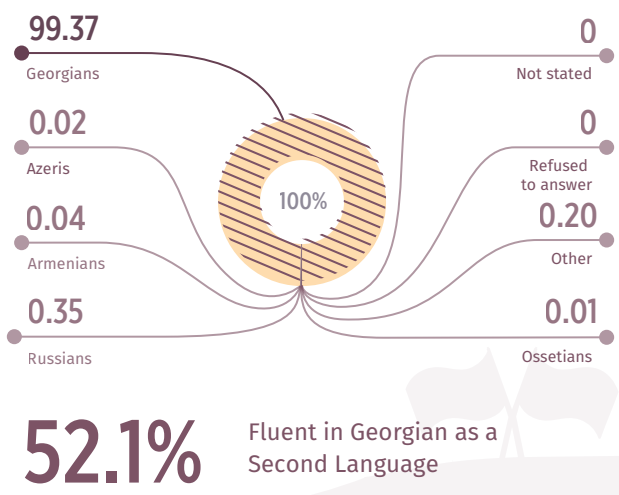
SAMEGRELO-ZEMO SVANETI

Total Population:
330 761

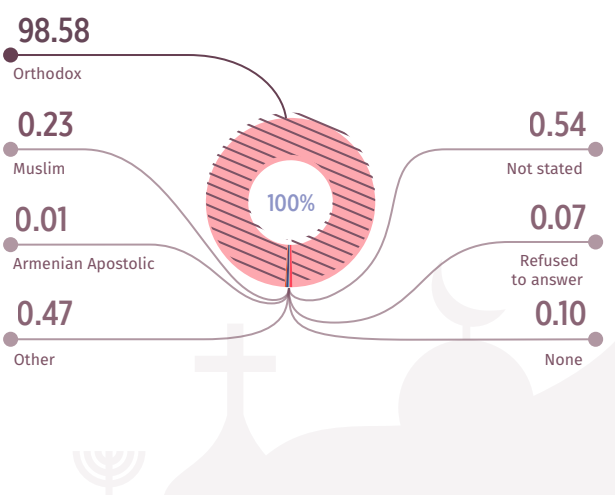
AGE BY GENDER



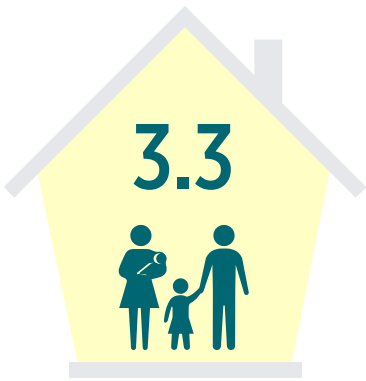
ETHNICITY



RELIGION

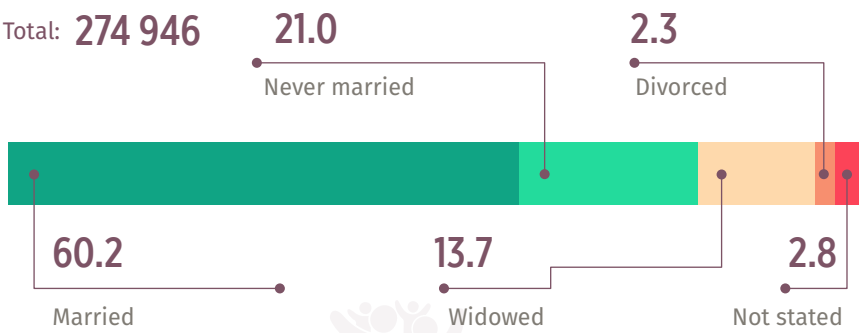


AVERAGE HOUSEHOLD SIZE



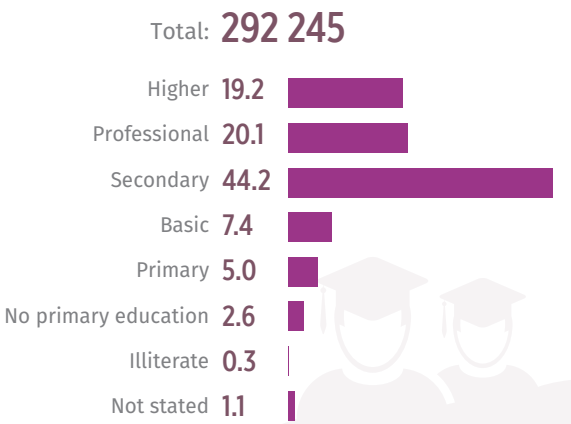
MARITAL STATUS

Marital status for 15 and older (%)



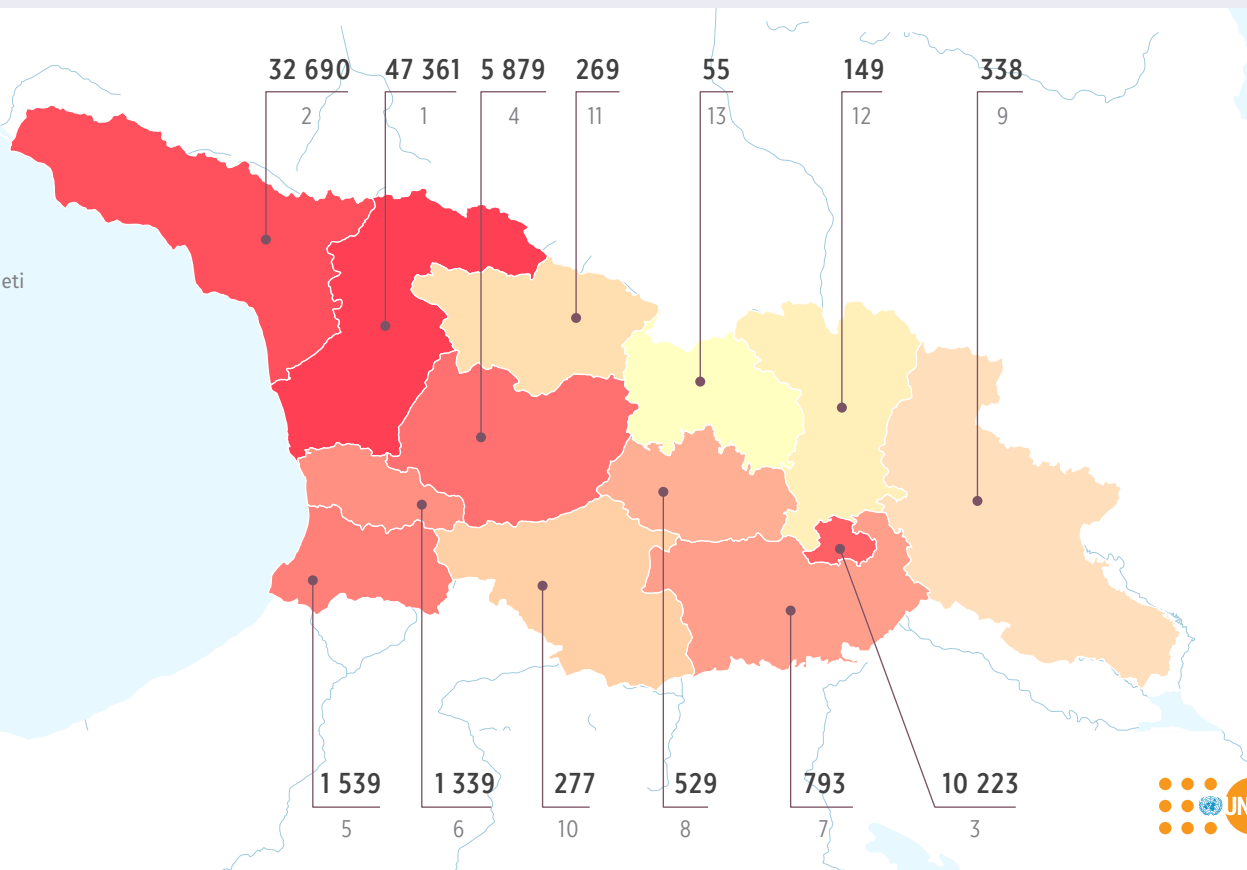
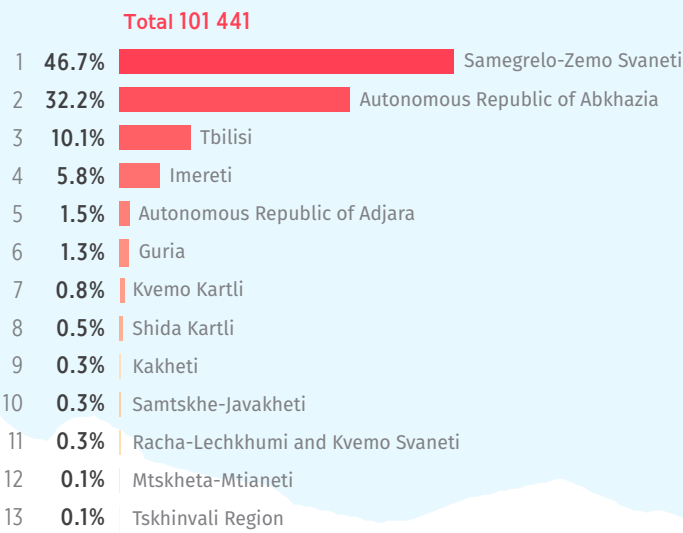
EDUCATION

Highest education level for 10 and older (%)



INTERNAL MIGRANTS

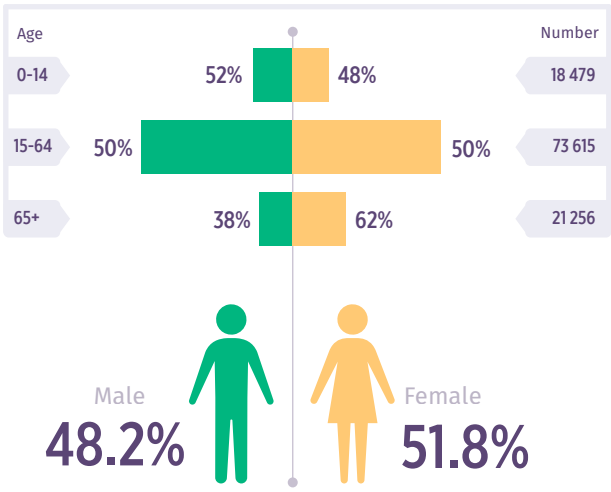
Distribution according to the previous places of residence



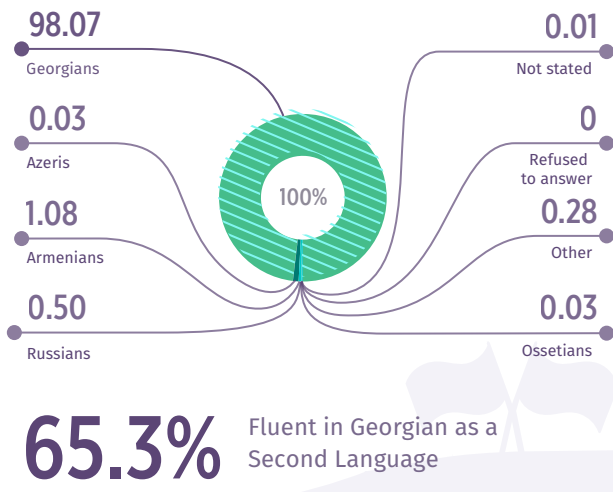
GURIA

Total Population:
113 350

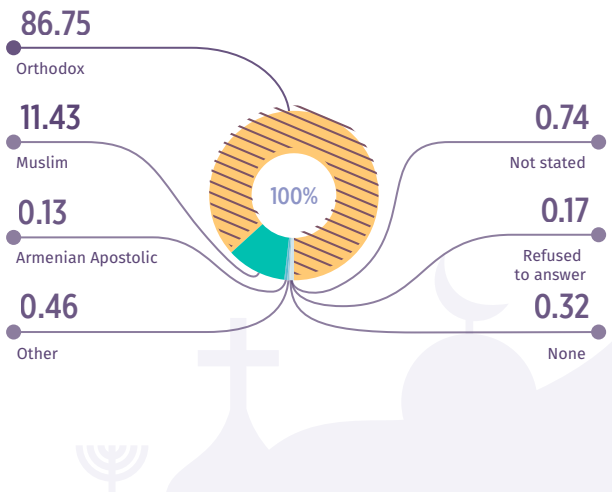
AGE BY GENDER



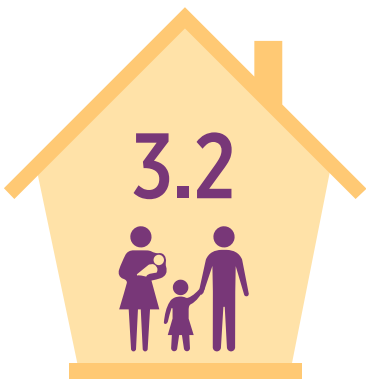
ETHNICITY



RELIGION

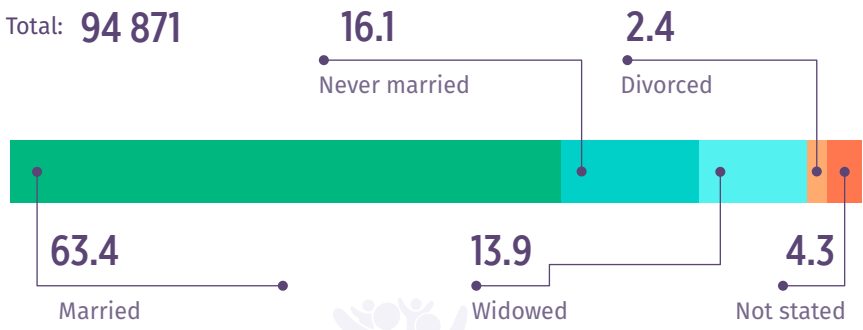


AVERAGE HOUSEHOLD SIZE



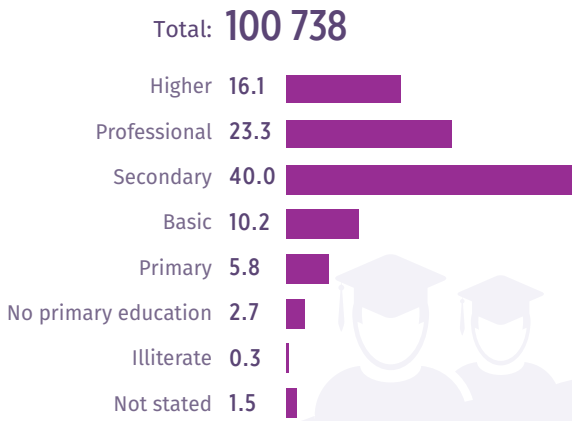
MARITAL STATUS

Marital status for 15 and older (%)



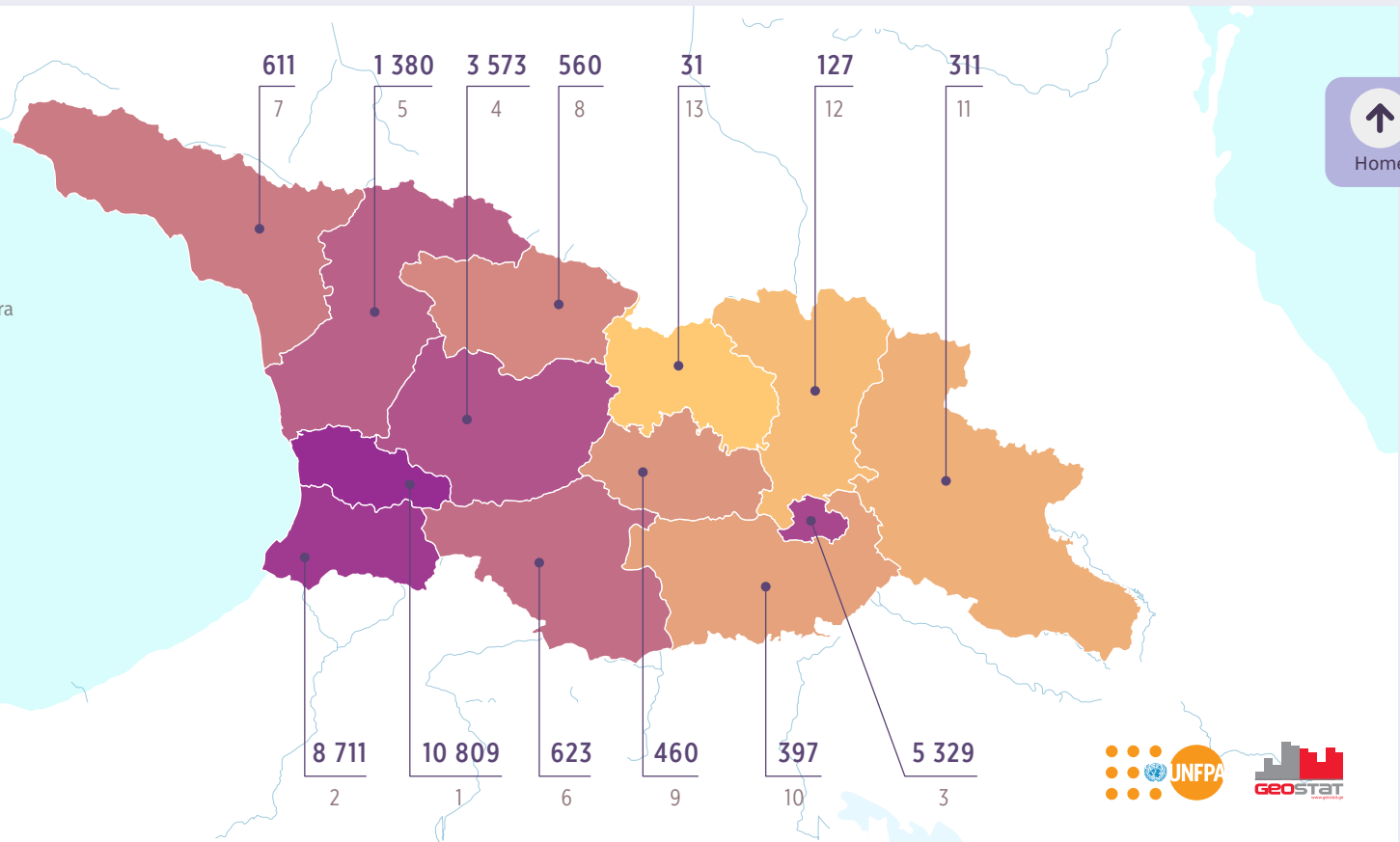
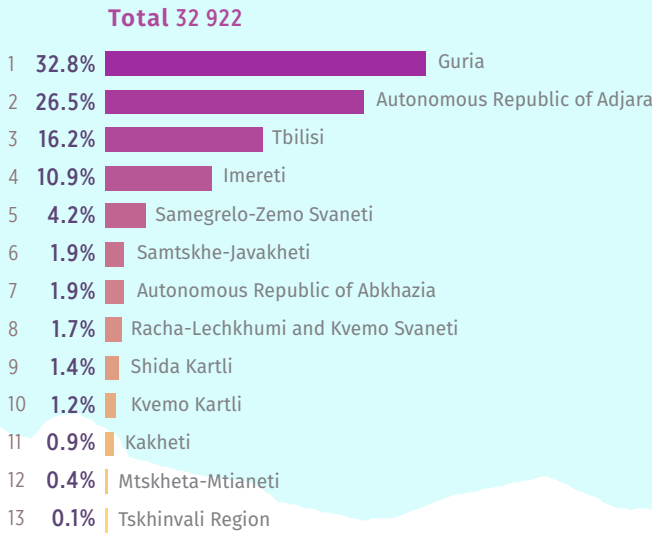
EDUCATION

Highest education level for 10 and older (%)



INTERNAL MIGRANTS

Distribution according to the previous places of residence

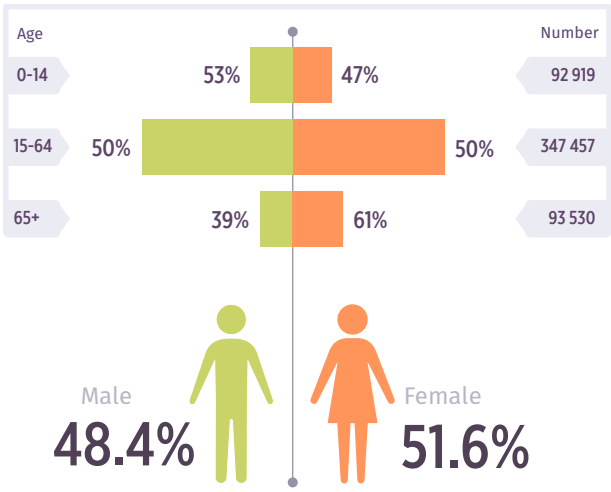




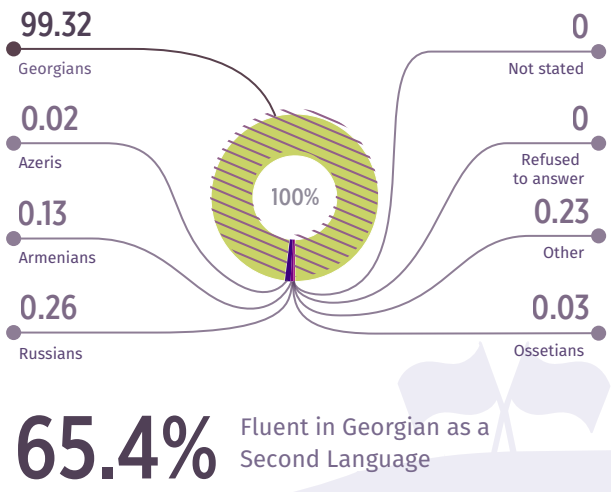
IMERETI

Total Population:
533 906

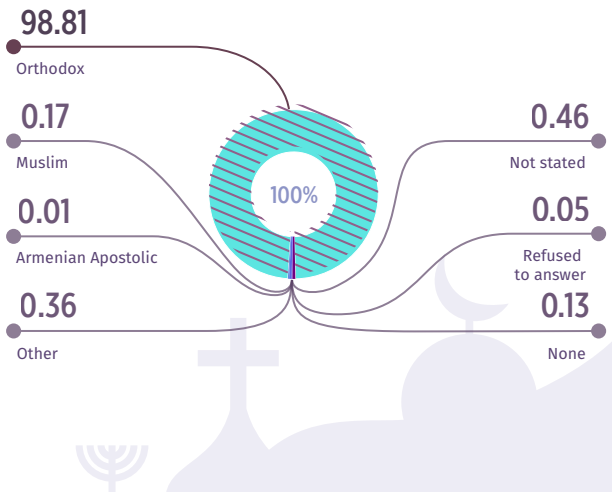
AGE BY GENDER



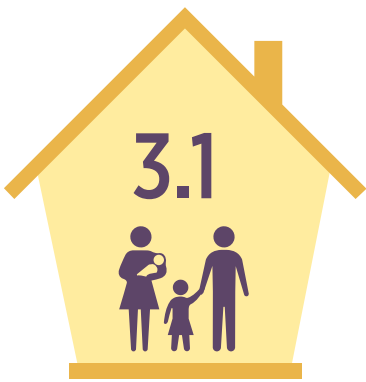
ETHNICITY



RELIGION

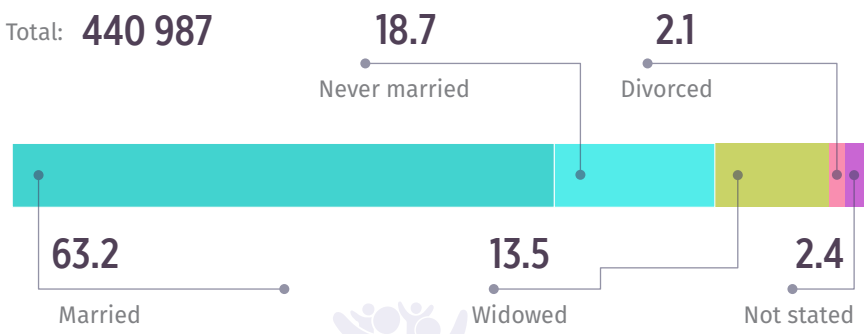


AVERAGE HOUSEHOLD SIZE



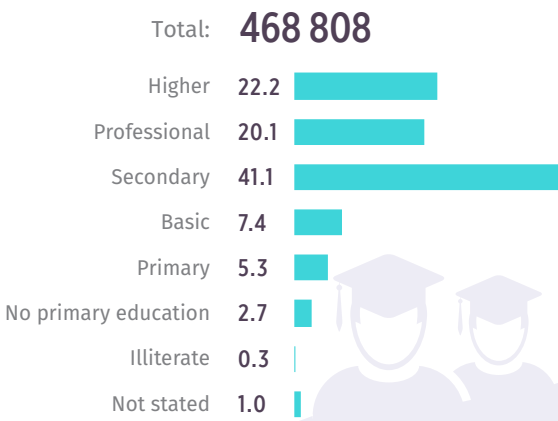
MARITAL STATUS

Marital status for 15 and older (%)



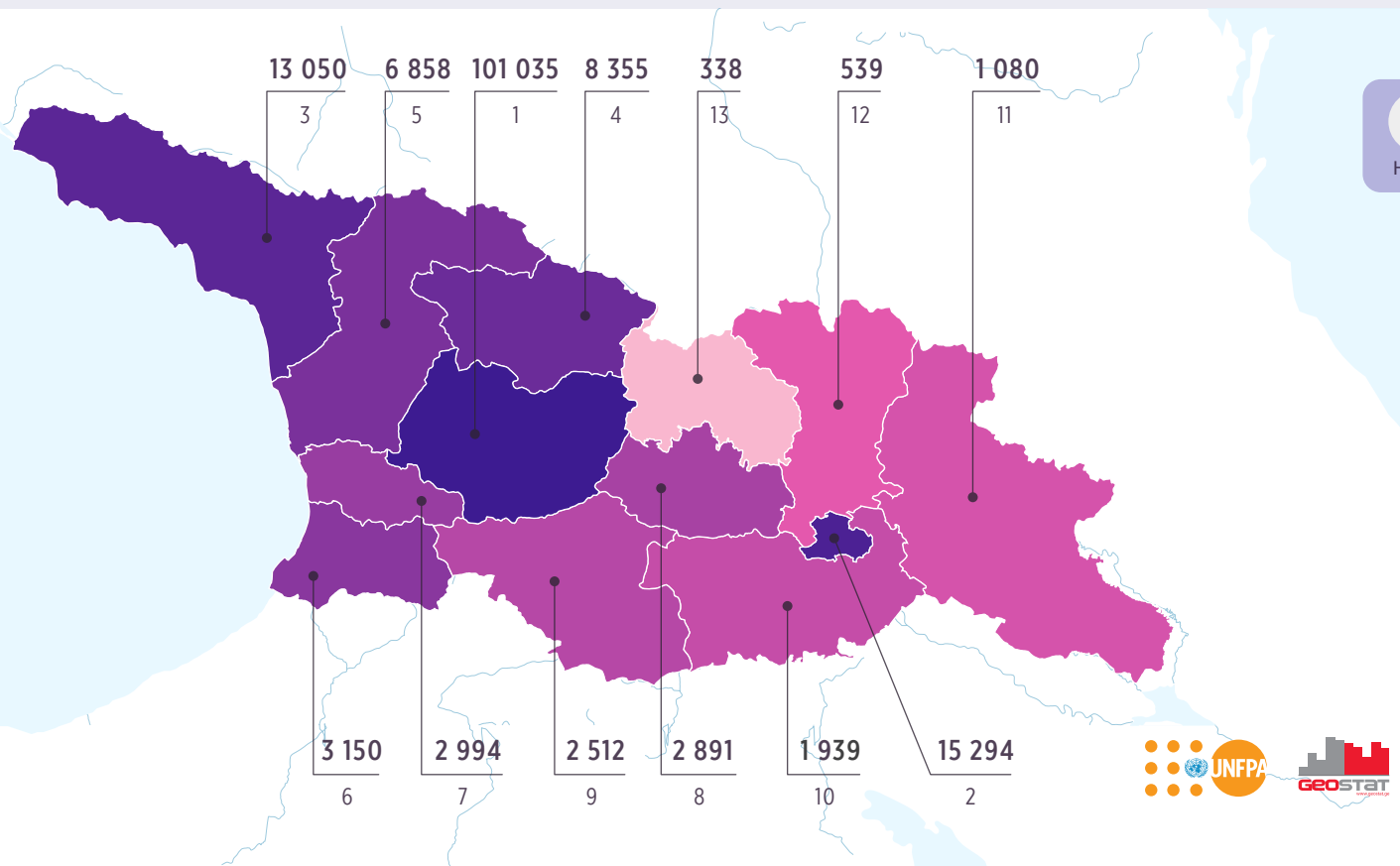
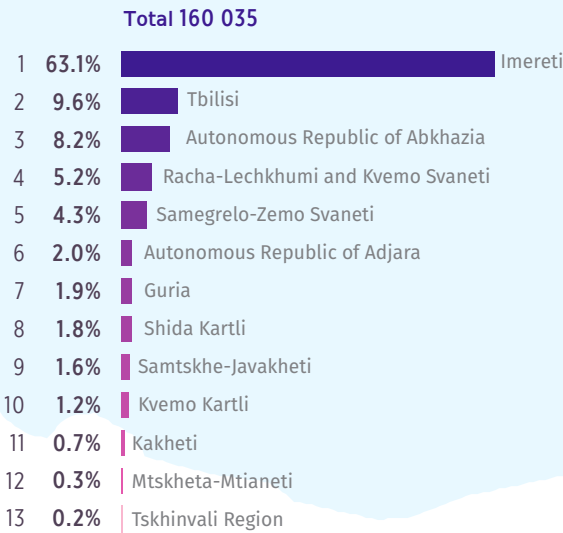
EDUCATION

Highest education level for 10 and older (%)



INTERNAL MIGRANTS

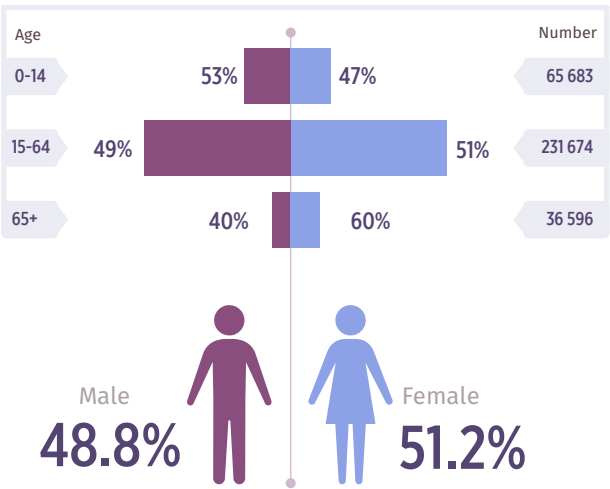
Distribution according to the previous places of residence



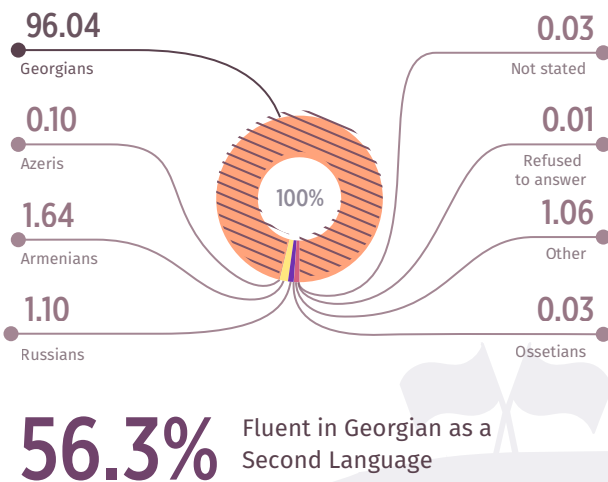
ADJARA

Total Population:
333 953

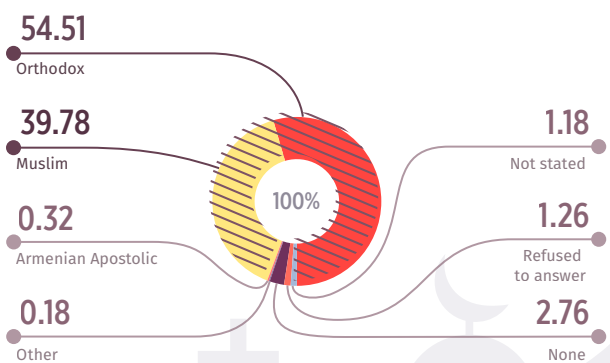
AGE BY GENDER



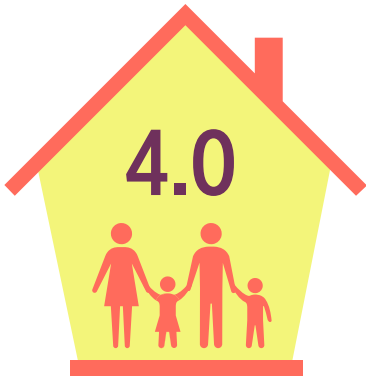
ETHNICITY



RELIGION

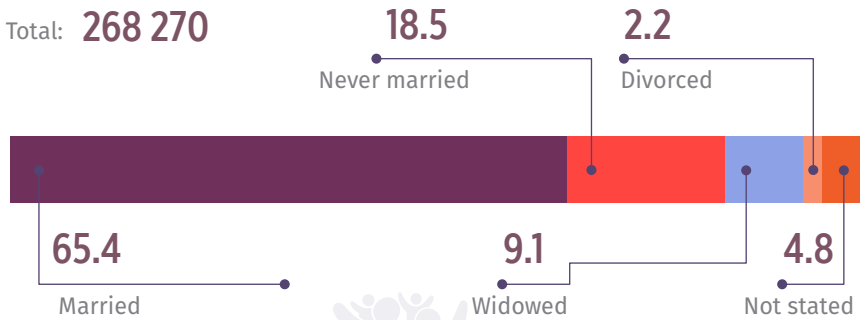


AVERAGE HOUSEHOLD SIZE



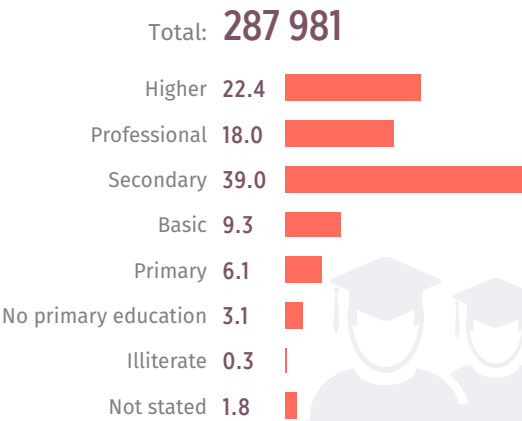
MARITAL STATUS

Marital status for 15 and older (%)



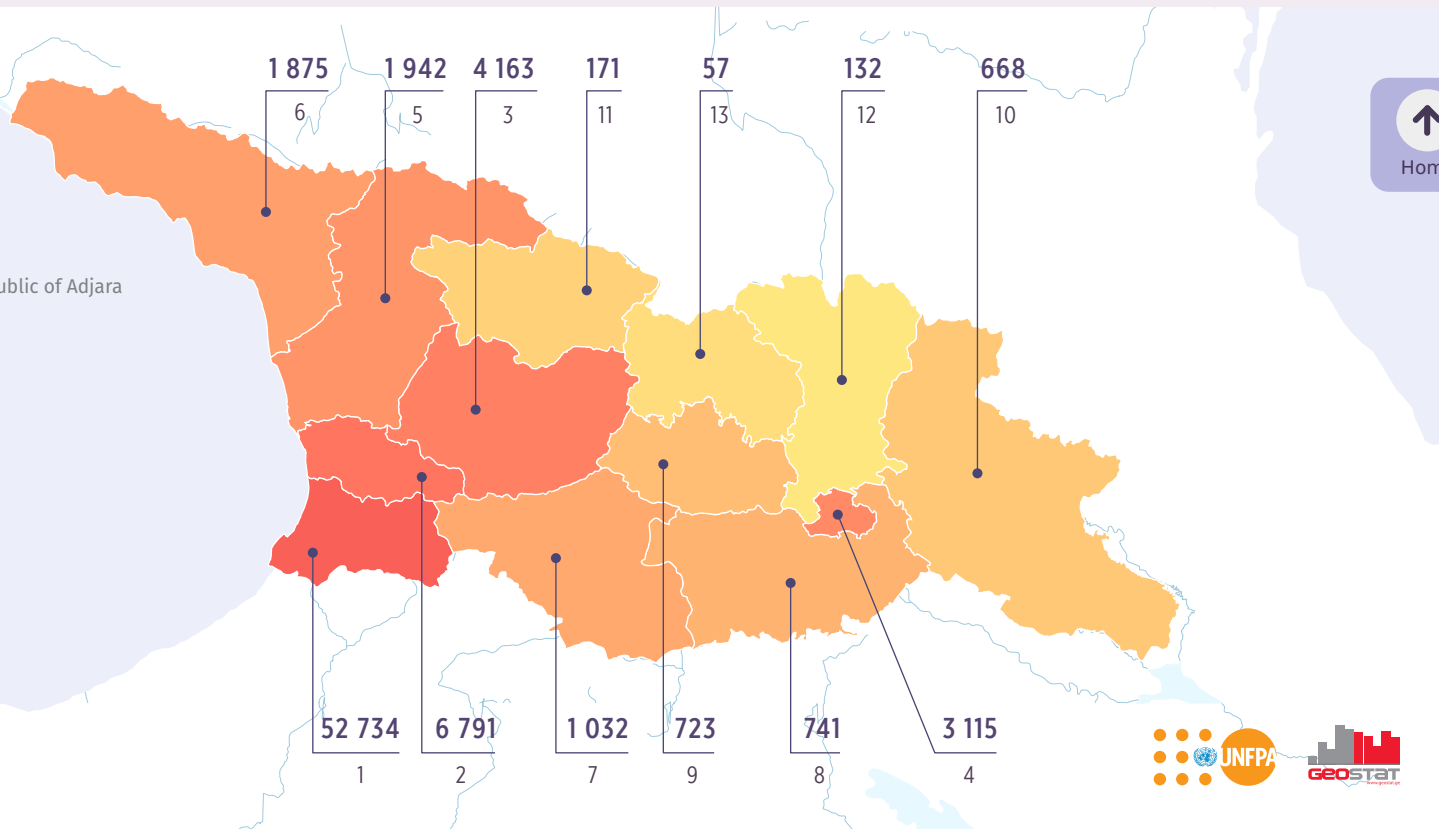
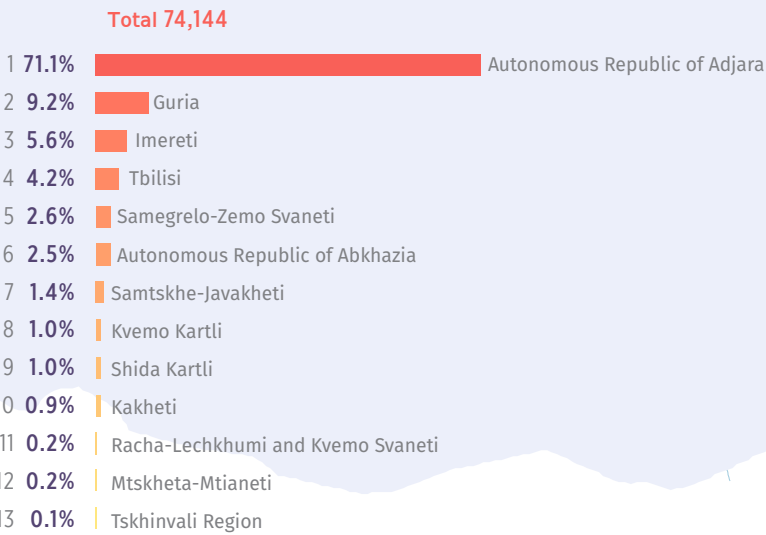
EDUCATION

Highest education level for 10 and older (%)



INTERNAL MIGRANTS

Distribution according to the previous places of residence

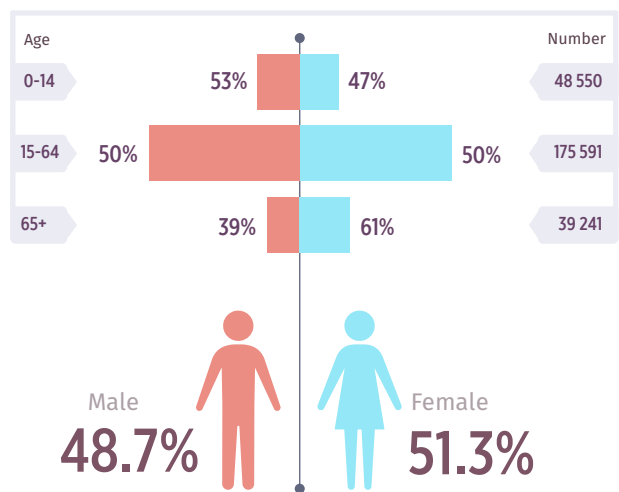


Home

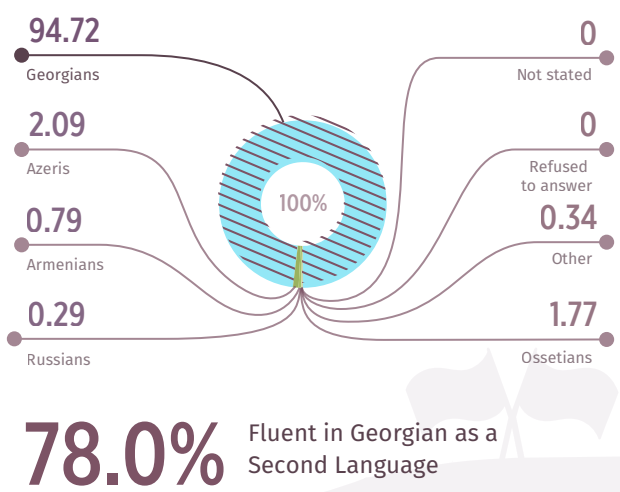
SHIDA KARTLI

Total Population:
263 382

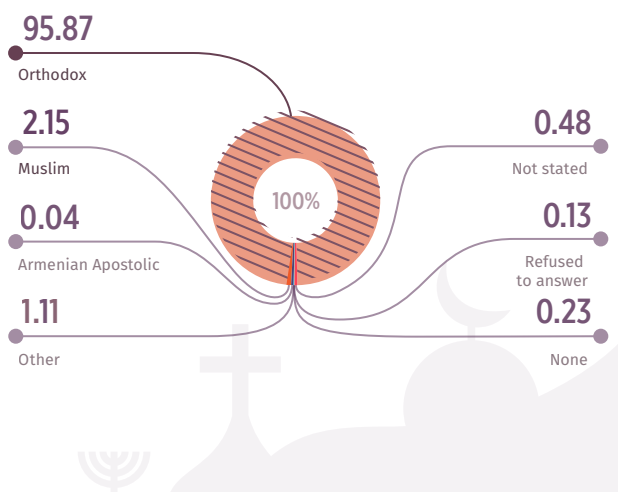
AGE BY GENDER



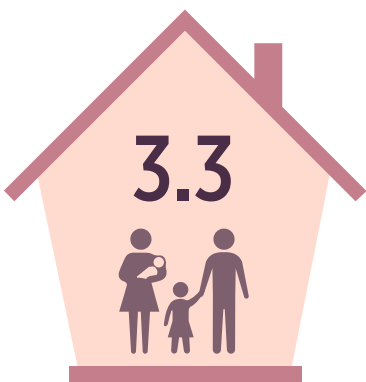
ETHNICITY



RELIGION

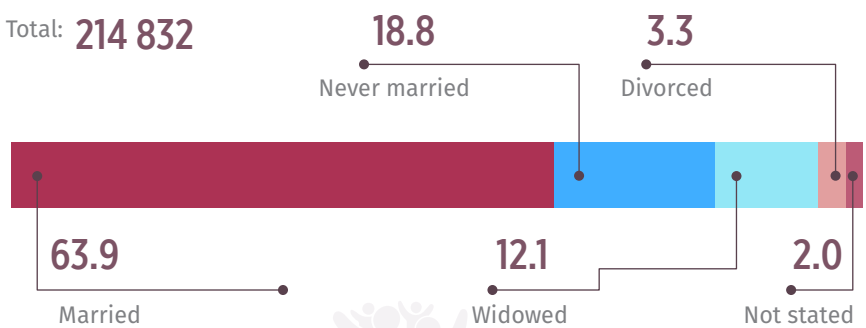


AVERAGE HOUSEHOLD SIZE



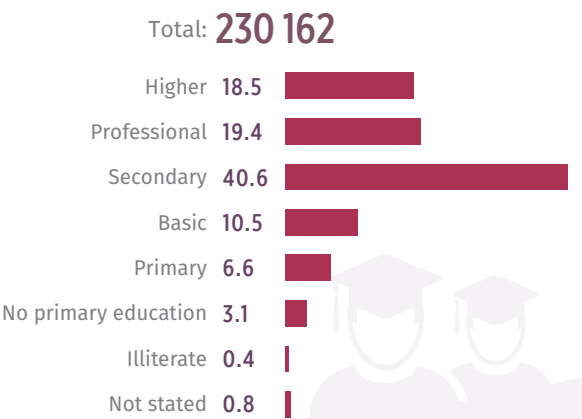
MARITAL STATUS

Marital status for 15 and older (%)



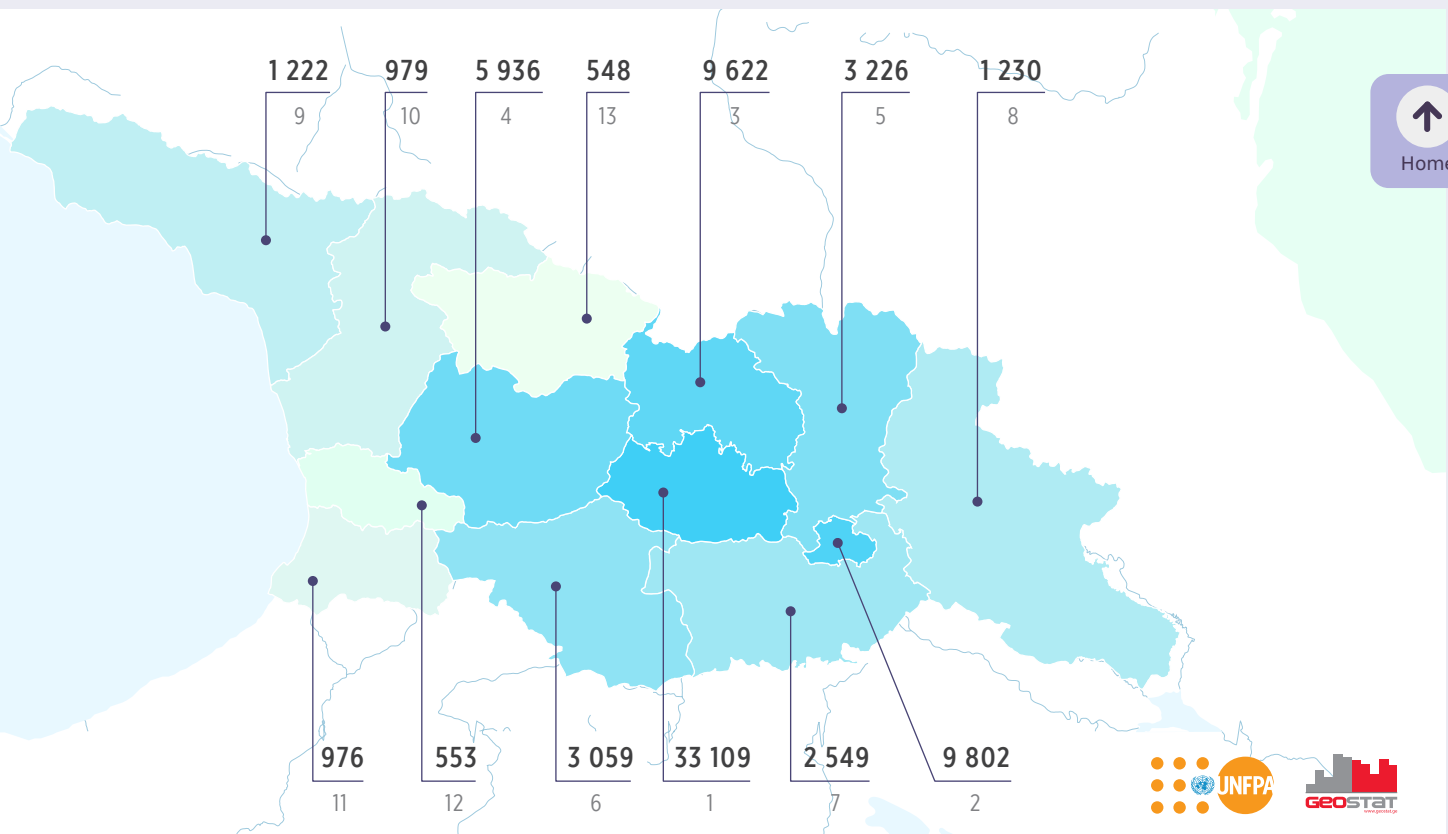
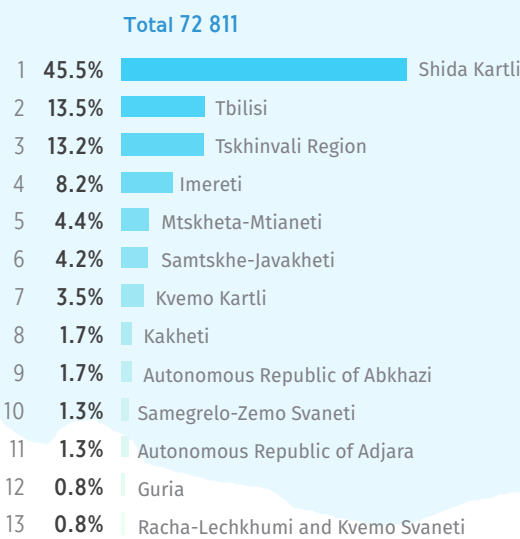
EDUCATION

Highest education level for 10 and older (%)



INTERNAL MIGRANTS

Distribution according to the previous places of residence



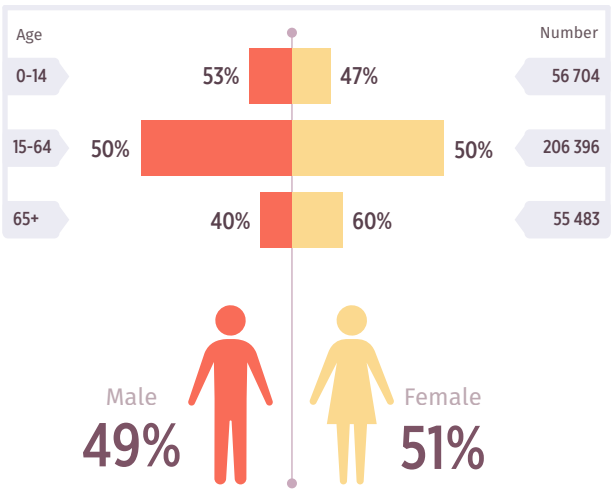
Home



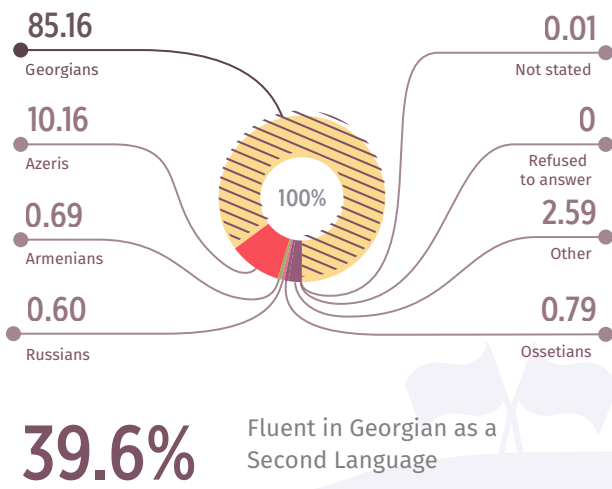
KAKHETI

Total Population:
318 583

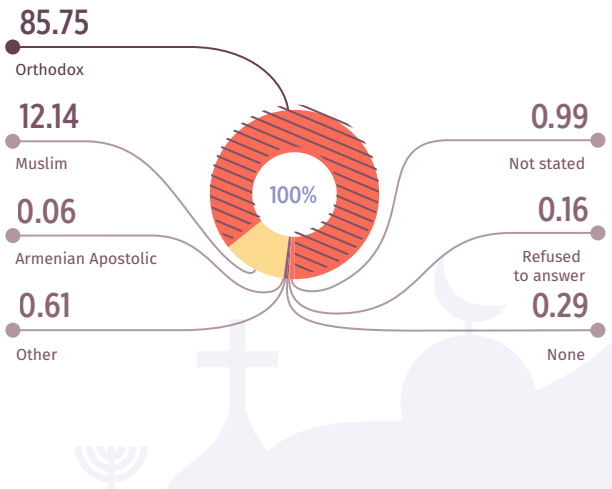
AGE BY GENDER



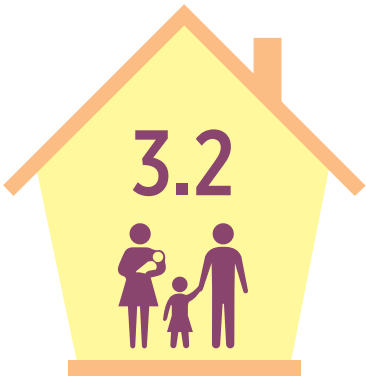
ETHNICITY



RELIGION

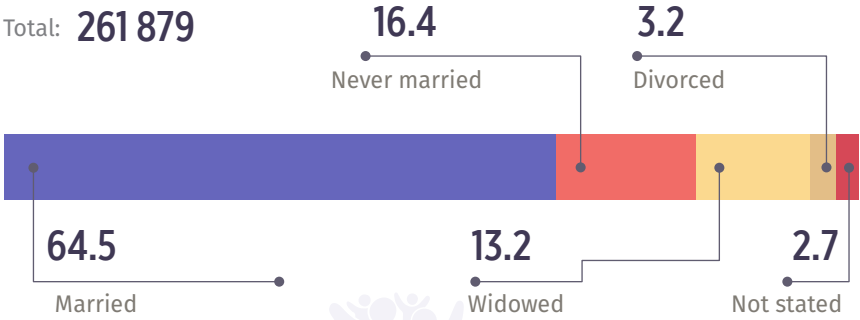


AVERAGE HOUSEHOLD SIZE



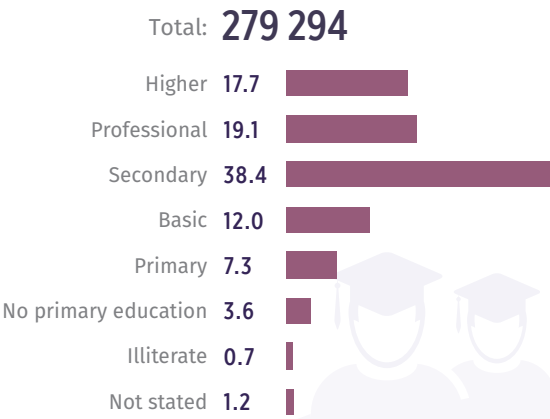
MARITAL STATUS

Marital status for 15 and older (%)



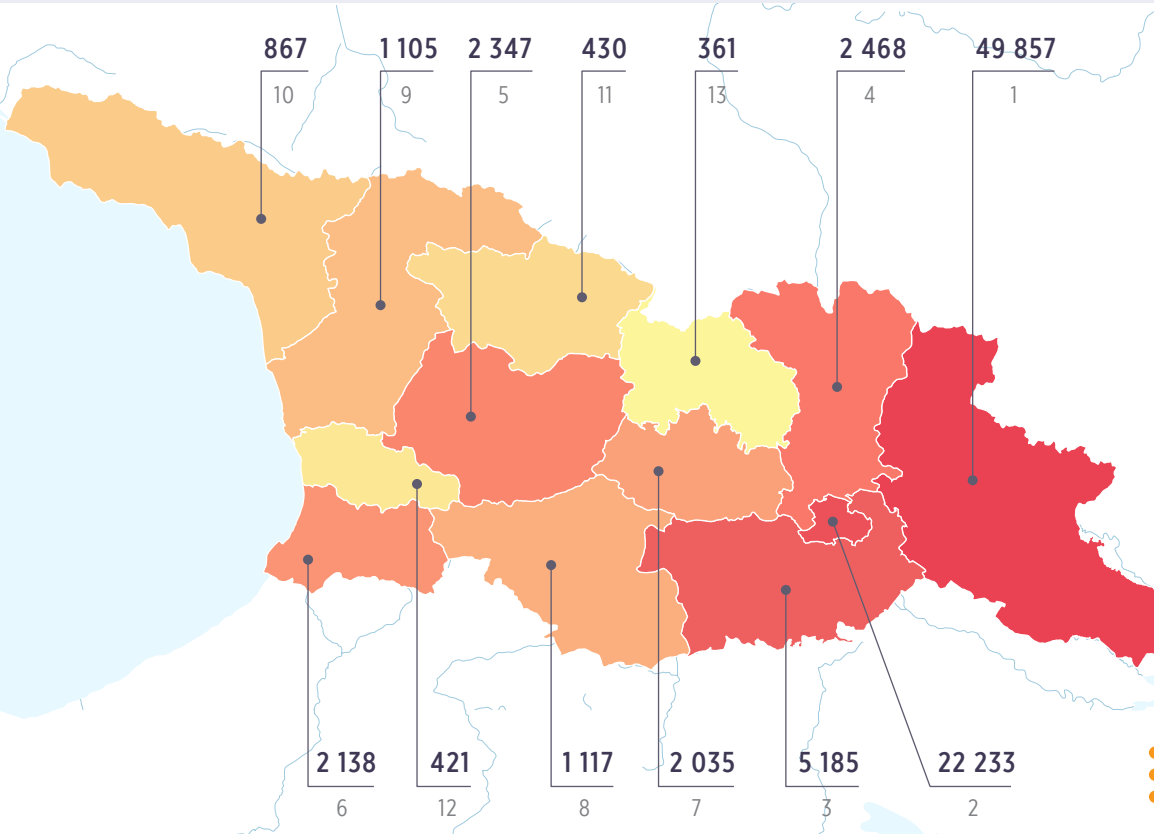
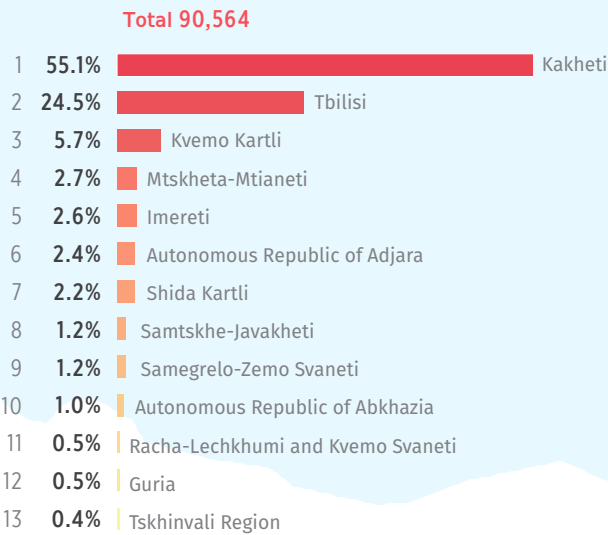
EDUCATION

Highest education level for 10 and older (%)



INTERNAL MIGRANTS

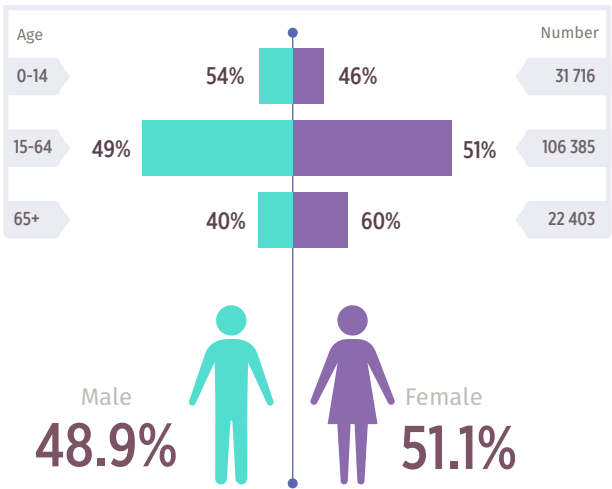
Distribution according to the previous places of residence



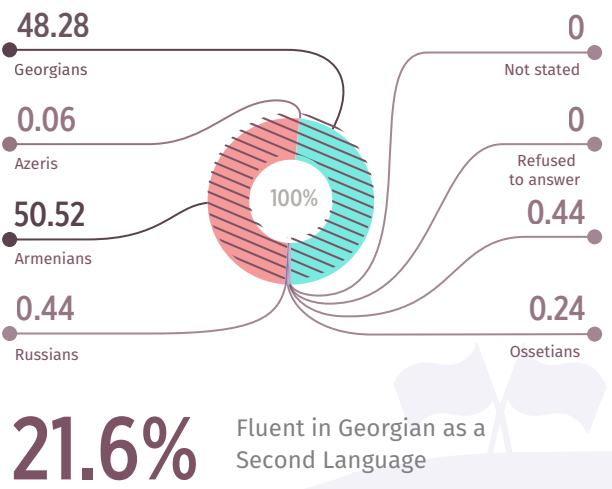
SAMTSKHE-JAVAKHETI

Total Population:
160 504

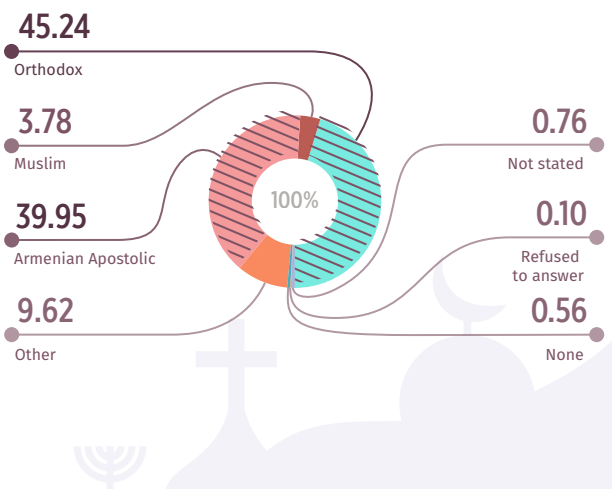
AGE BY GENDER



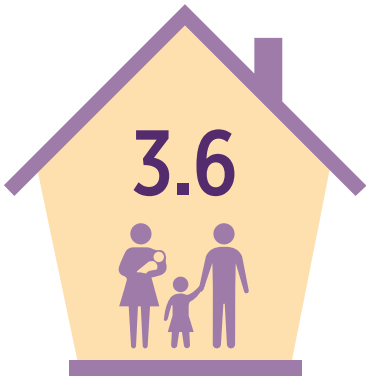
ETHNICITY



RELIGION

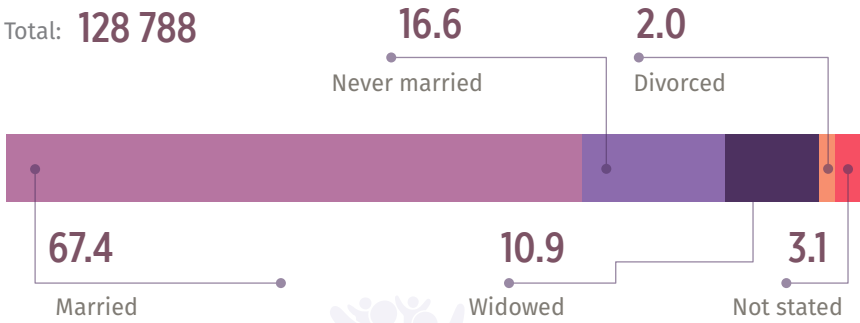


AVERAGE HOUSEHOLD SIZE



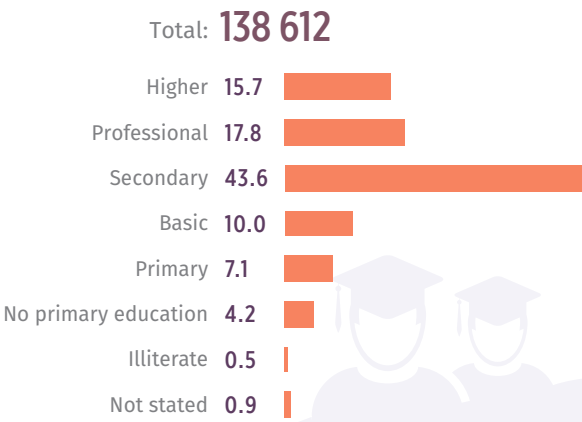
MARITAL STATUS

Marital status for 15 and older (%)



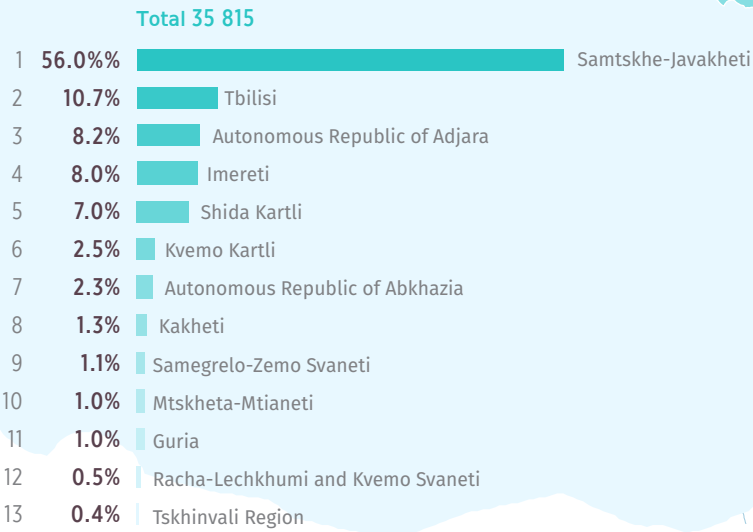
EDUCATION

Highest education level for 10 and older (%)



INTERNAL MIGRANTS

Distribution according to the previous places of residence



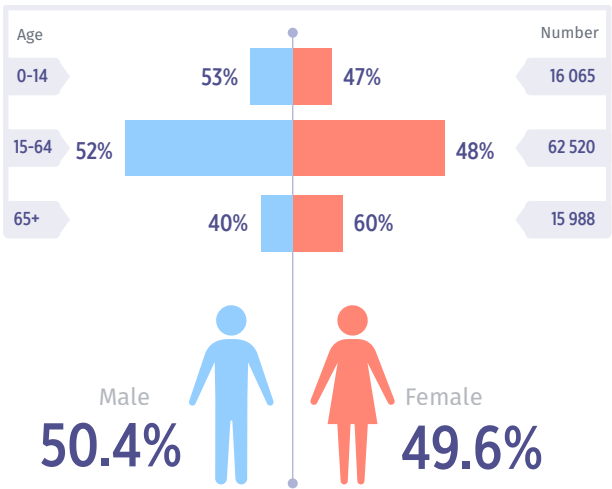
Home



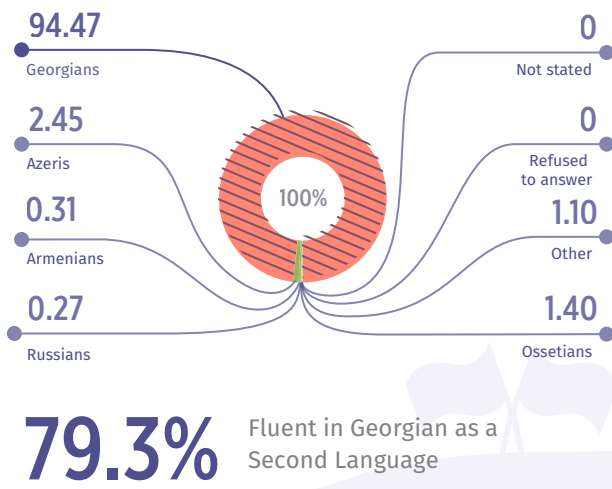
MTSKHETA-MTIANETI

Total Population:
94 573

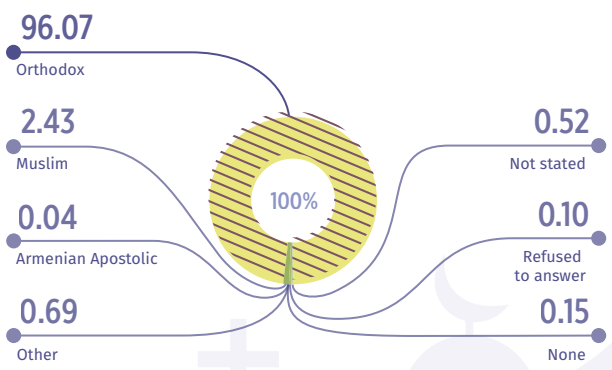
AGE BY GENDER



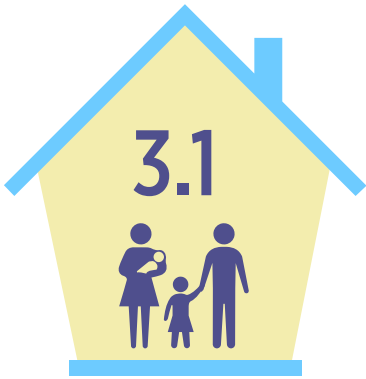
ETHNICITY



RELIGION

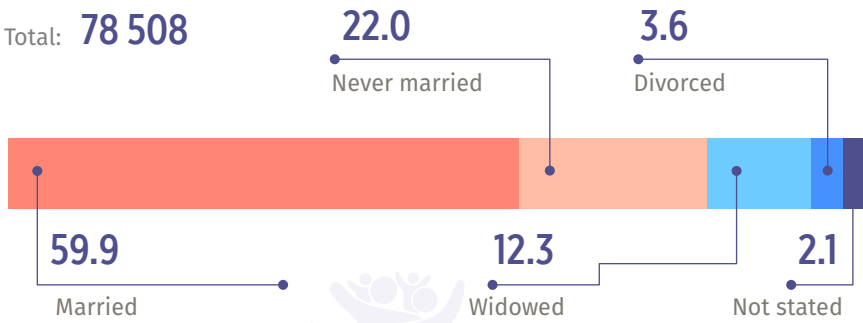


AVERAGE HOUSEHOLD SIZE



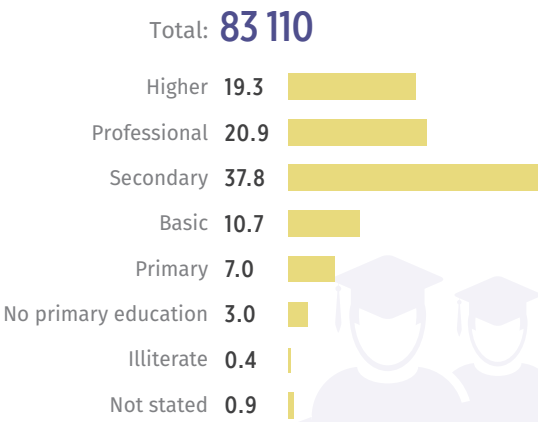
MARITAL STATUS

Marital status for 15 and older (%)



EDUCATION

Highest education level for 10 and older (%)



INTERNAL MIGRANTS

Distribution according to the previous places of residence

